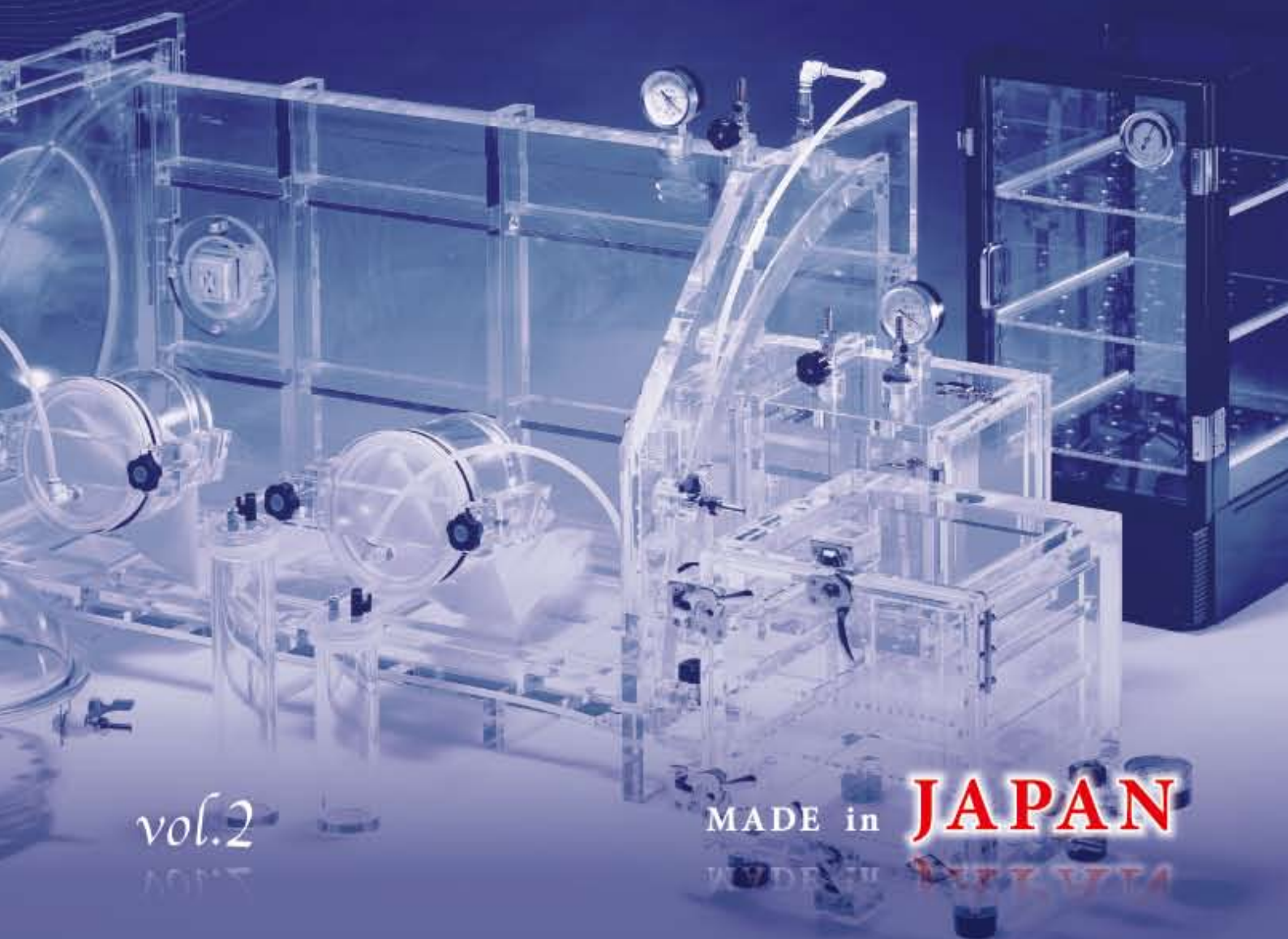




PLASTICS SCIENCE-CHEMISTRY EQUIPMENT CATALOG



vol.2

MADE in

JAPAN

We aim new creation of 'additional value' Better products with 50-year history and performance.

Sanplatec has kept establishing the market as a professional plastic experimental instrument maker from 1960.

At that time, we introduced our plastic products when researchers still concerned glass as a major material, and our attempt created a new value for Japanese products creation.

We created over 3,000 original products which included our TPX products after 1979. These products got very high rating from our customers.

However, we never stop our challenge, for competing Japanese high level technology, we introduced more high functional material products such as fluoroc resin.

At the same time, we also create additional value products with 'high efficiency, high quality, and high convenience' in order to fulfill our customers' various demands.

Our goal is to become more advanced company by making additional value onto 50- year history and performance.

We will keep contributing our 'MADE IN JAPAN' quality for world wide products creation.

CONTENTS



ACRYLIC VACUUM GLOVE BOX **P.006**

BIG SIZE TYPE	008
MIDDLE SIZE TYPE	010
COMPACT SIZE TYPE	011
VACUUM PUMP	011



GLOVE BOX **P.012**

GAS REPLACEABLE GLOVE BOX	012
STERILIZE BOX	013
GAS REPLACEABLE GLOVE BOX COMPACT TYPE	014
STERILIZE BOX COMPACT TYPE	014
MOBILE LAB SPACE	014



ACRYLIC VACUUM DESICCATOR **P.018**

MIDDLE SIZE TYPE	018
HANDY SIZE TYPE	021
POLYCARBONATE VACUUM DESICCATOR	022
VACUUM AIRLESS PUMP	022



DESICCATOR HOOD ... **P.023**

SUPER DRY KEEPER	023
DRY KEEPER	024
i-BOX	025
MOBILE DESICCATOR	027
FORMATION HOOD	028



FLUORIC RESIN PFA SERIES **P.030**

PFA BOTTLES	030
PFA WASH BOTTLE	032
PFA BEAKER	033
PFA GRADUATED FLASKS	033
PFA TESTING TUBES	034



FLUORIC RESIN PTFE SERIES **P.035**

PTFE BOTTLES	035
PTFE BEAKER	036
PTFE PETRI DISH	036
PTFE FILTER HOLDER	037
PTFE TAPERED TWEEZER	037



FLUORIC RESIN TUBING **P.038**

PFA TUBING	038
PTFE TUBING	038



TPX® SERIES **P.040**

TPX® BEAKER	040
TPX® FUNNELS	040
TPX® METER GLASS	040
TPX® GRADUATED CYLINDERS	041
TPX® TUBING CONNECTORS	042



WASH BOTTLES **P.043**

MULTI-WASH BOTTLES	043
GAS REMOVABLE WASH BOTTLE	043
SOFT WASH BOTTLE "SOFTY"	043



BOTTLES **P.044**

FLURO BARRIER SERIES	044
SQUARE TYPE BOTTLES	045
BOTTLES WITH SPIGOT	046
ROUND TYPE BOTTLES	047



CELL CULTURE DISH **P.050**

SHeIlDisH®	050
SHeIlDisH® COLLAGEN I COATING	050
GLASS BOTTOM DISH	051



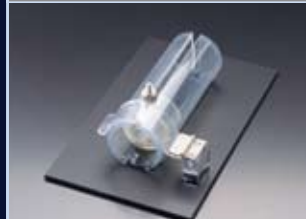
CHILL POCKETS™ SERIES **P.052**

ICE CASE CHILL POCKETS™	053
COOLING CONTAINER	053
CHILL POCKETS™	053
ICE RACK CHILL POCKETS™	053
SCREW CAP OPENER	053
MULTI STAND	053



INCUBATOR **P.054**

P-BOX (COMPACT INCUBATOR)	054
EASY CELL CULTURE KIT	054
TPX® PETRI DISH	055
CULTUREPAL® CO ₂	055
SQUARE JAR	055



ANIMAL EXPERIMENT SUPPORTIVE DEVICE **P.056**

RAT FIXADJUSTER	056
MOUSE FIX ADJUSTER	056
CO ₂ ANESTHESIA UNITS	056
FOR VINEGAR FLY	056
ANESTHESIA BOX	056



ELECTROPHORESIS **P.057**

PETRI MULTI RACK	057
ELECTROPHORESIS	057
DENSITY GRADIENT EQUIPMENT	057



OTHER ITEM **P.058**

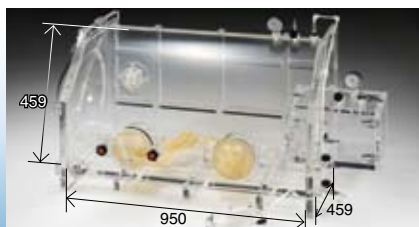
TELEPO MARKER™	058
MAGNETIC STIRRER	059
TRANS OARENCY METER	059
TIP WASHER	059
PIPETTE WASHER	059

SANPLATEC® Glove Box Series



Vacuum Glove Box

Sanplatec vacuum glove box is made of transparent acrylic. It has excellent visibility, and you can make efficient gas replacement by decompress inside.



Code No.19100

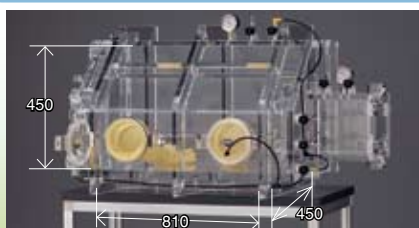
▶▶ P.08

Acrylic Vacuum Glove Box 'Clear View' CV-1000 Type

Main Box	Pass Box
Able to vacuum(-0.1 MPa)	Able to vacuum(-0.1 MPa)

Remove support ribs from the observation face. Great visibility!

Much better visibility by remove support ribs from the observation face, you can observe inside easier. Also, it comes with full standard equipment, such as pass box, vacuum gauge, and grounded outlet.



Code No.6590

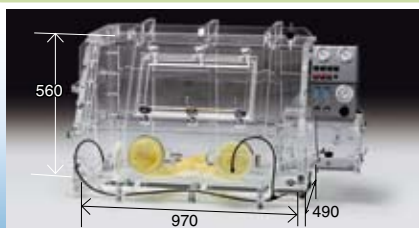
▶▶ P.09

Acrylic Vacuum Glove Box VG-800 Type

Main Box	Pass Box
Able to vacuum(-0.1 MPa)	Able to vacuum(-0.1 MPa)

The final edition vacuum glove box.

Take operation machine in and out from leftside door, and take tools and testing material in and out from right pass box. It is designed to resist complete vacuum.



Code No.6904

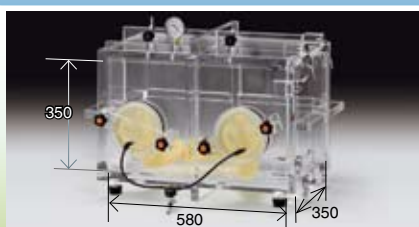
▶▶ P.09

Vacuum Glove Box VSC-1000 Type (with Unit)

Main Box	Pass Box
Able to vacuum(-0.1 MPa)	Able to vacuum(-0.1 MPa)

King size glove box.

You can start and stop vacuum pump or control exhaust and gas supply by only press buttons on the unit. It helps you to operate more secure and easier gas replacement.



Code No.0268

▶▶ P.10

Acrylic Vacuum Glove Box Square Type (VG-600)

Main Box	Pass Box
Able to vacuum(-0.1 MPa)	No Pass Box

Middle size vacuum glove box.

Vacuum glove box with reasonable size and price.



Code No.6593

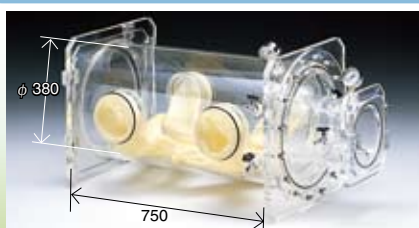
▶▶ P.10

Vacuum Glove Box M-600H Type

Main Box	Pass Box
Able to vacuum(-0.1 MPa)	Able to vacuum(-0.1 MPa)

Excellent round view!

The hemisphere makes great visibility from upper side.



Code No.0199

▶▶ P.10

Acrylic Vacuum Glove Box Round Type (400 Type)

Main Box	Pass Box
Able to vacuum(-0.1 MPa)	Able to vacuum(-0.1 MPa)

Two people are able to work together in this glove box.

You can use it for examine or store long size material.



**Glove Box
Compact
Vacuum Type**

▶▶ P.11



**Oil-sealed
Rotary
Vacuum
Pump**

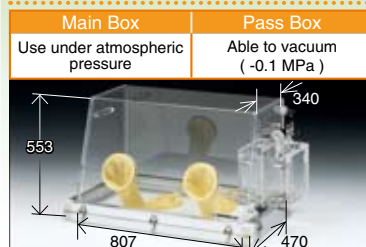
▶▶ P.11

Gas Purge Model Glove Box

Glove box with gas replacement function only, so you can save your cost.
Of course it is able to do steady inside operation. * The size indicates body inner size.

Code No.6903
P.12

Gas Replaceable Glove Box G Type (Purge Model)

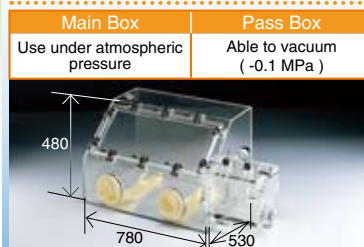


Easy to separate body and bottom parts.

The body and bottom are able to separate completely, so you can install heavy weight or maximum volume equipment. One of our good selling item.

Code No.6591
P.12

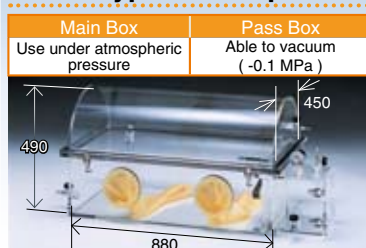
Gas Replaceable Glove Box DX-II Type (Purge Model)



A standard gas replacement glove box.

Code No.6103
P.12

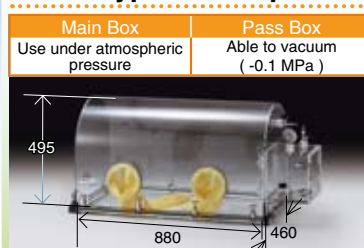
Dome Type Gas Replaceable Glove Box DOM-I



Better workability. More convenient design.

Code No.6104
P.12

Dome Type Gas Replaceable Glove Box DOM-II

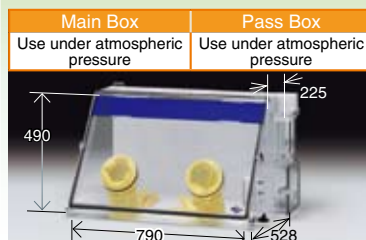


It is able to purge the bottom part.
A glove box with outstanding dome shape.

Sterilize Box & Compact Glove Box

Code No.0228
P.13

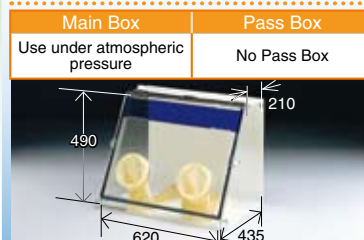
Sterilize Box U-DX Type (with Sterilize Lamp Resist Plate)



It is able to send germ free dry air through clean filter.

Code No.0186
P.13

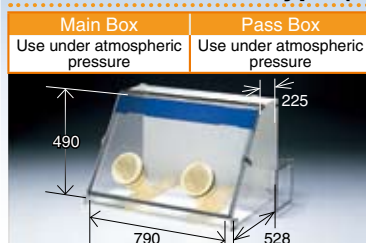
Sterilize Box ST-1 Type (Normal MA Plate)



It has large open space, better to use.

Code No.0187
P.13

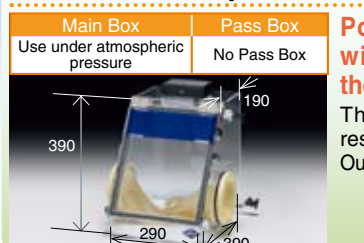
Sterilize Box ST-2 Type (Normal MA Plate)



Wide size sterilize box.

Code No.25401
P.14

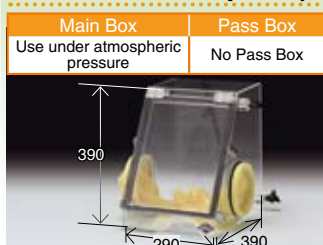
Glove Box Compact with Sterilize Lamp



Popular compact series with a sterilize lamp as the standard equipment.
The body uses sterilize lamp resist plate.
Outer size 409W×416D×440Hmm.

Code No.18003
P.14

Glove Box Compact (Purge Model)

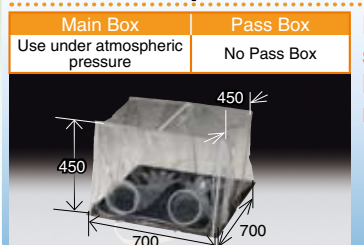


Small! Light Weight! Very compact gas replaceable glove box.

We install the glove port at each opposite side, to make the compact size. Also, it is easy to move because of the light weight.

Code No.27001
P.14

Mobile Lab Space Cubic Type



Easy transportation and storage.
New compact glove box now on sale.

Vacuum Glove Box How to Use



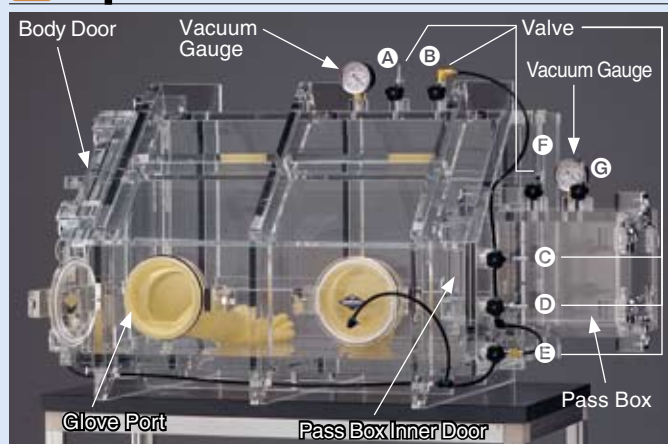
It can create an environment full of an inert gas.

Use vacuum pump to evacuate inside air by gas replacement that supports steady operation under environment without external factor, such as oxidation, moisture, and dust. Also, it has excellent visibility with all acrylic surface in order to support more comfortable operation.

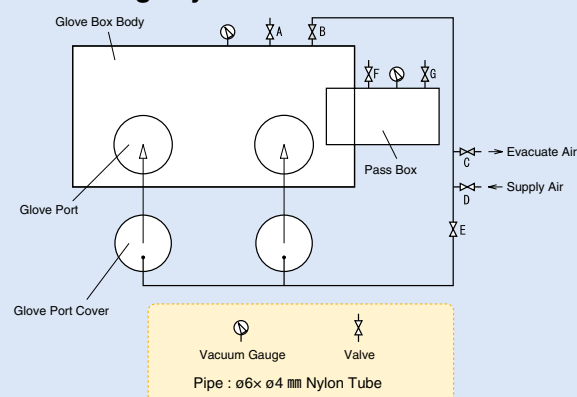
Vacuum glove box is mainly used for operating a precision instrument, such as an electron balance and microscope, mixing testing materials, and for other usages.

Especially, vacuum glove box is required in research field of next generation battery because it is important to compound testing materials under airless condition in order to develop high-performance electrolyte.

Operation Manual



Plumbing Layout



How to Do Decompression Replacement

- ① Open its body door and put any operating material inside.
- ② Use latch lock and air tight handle to close body and pass box outside doors. Please open pass box inside door. If you start decompression when the pass box inside door is closed, inside of pass box may change to additional pressure condition, and it may damage pass box inside door.
- ③ Attach glove port cover into body by using glove port cover bolts. Please make sure you adjust gasket into average tightness by rotating the glove port cover bolts.
- ④ Close all valves, make sure inside is completely sealed.
- ⑤ Connect valve C and vacuum pump.
- ⑥ Open valve B, C, E, start the vacuum pump, then exhaust inside of body and glove port at once. Close valve C and valve E, and stop vacuum pump after the pressure reach to your target range.
- ⑦ Please attach connector, which introduce the gas to inside of the glove box, to valve D. Make sure that no any extra pressure on it at that time. Open valve D little by little, and slowly introduce gas.
- ⑧ Use vacuum gauge to make sure the inside pressure is 0MPa (Atmospheric pressure). Then, close valve D and C to stop gas supply. You can do more effective gas replacement by repeat ⑤-⑦ step several times.



- ⑨ Remove gas connector and vacuum pump connector. Open valve D and E in order to recover the inside pressure of glove port. Remove glove port cover and start operation or test after the atmospheric pressure back to normal.

◀ How to Use Pass Box ▶

You may break the surrounding if you repeat to open and close the door after successfully finish gas replacement. If the material is small please use pass box. It will protect the inside surrounding.

● In case to pick up material from inside

- ① Make sure the vacuum gauge indicates 0MPa.
- ② Use glove to move the material into pass box, then close the pass box inner door.
- ③ Open pass box outer door and pick up the material. Please do proper exhaust process at that time.



● In case to put material into the box

- ① Make sure the vacuum gauge indicates 0MPa, and the valve F and G are closed.
- ② Make sure the pass box inner door is closed by airtight handle, then open the pass box outer door.
- ③ Put material into the pass box, the lock the pass box latch lock.
- ④ Connect valve G and vacuum pump.
- ⑤ Open valve G, and operate vacuum pump to exhaust air inside of pass box. After check the vacuum gauge reach to target range, close valve G and stop vacuum pump.
- ⑥ Please attach connector, which introduce the gas to inside of the glove box, to valve F. Make sure that no any extra pressure on it at that time. Open valve F little by little, and slowly introduce gas.
- ⑦ Use vacuum gauge to make sure the inside pressure is 0MPa (Atmospheric pressure). Then, close valve F to stop gas supply. You can do more effective gas replacement by repeat ⑤-⑦ step several times.
- ⑧ Remove vacuum pump and gas connector. Open pass box inner door and put material into the box.

Easy Search on The Website

You can check more details of all items listed on Sanplatec catalogue from our official website.

Not only check products information, but also it contains multiple convenient tools, such as search engine for plastic chemical resistance and movies of products usage.

sanplatec.co.jp/en/index |

Search 



SANPLATEC CORP.

Acrylic Vacuum Glove Box Clear View

VACUUM GLOVE BOX 'CLEAR VIEW'



Code No.

Model

19100

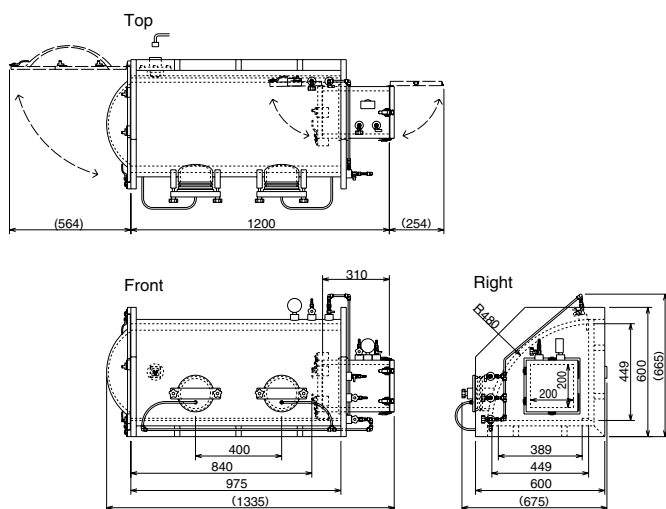
CV-1000 Type

●Features

- The acrylic vacuum glove box clear view is a new type that has eliminated reinforcing ribs from the observation face.
- The 'CLEAR VIEW' has improved visibility and workability that provide you with the perfect gas replacement environment.

●Note

We only have 100V desiccators.
It requires additional transformer in order to use it in other countries.

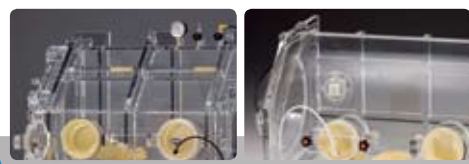


■Specifications

Outside Dimensions	1335 W x 675 D x 665 H mm
Main Unit Inside Dimensions	840 W x 389 D (bottom surface) x 449 H (backside surface) mm, front curved surface radius R = 480 mm
Pass Box Inside Dimensions	310 W x 200 D x 200 H mm
Inside Diameter of the Glove Port	140 mm
Vacuum Gauge	Main Unit, Pass Box: One each; 0 to -0.1 MPa
Needle Valve	Four; Nozzle diameter 9 mm
Ball Valve	Three; Nozzle diameter 9 mm
Main Unit Material	Made of acrylic resin
Packing Material	Made of silicon
Glove Material	Made of natural rubber
Tubes	Made of nylon Outside diameter 8 mm x inside diameter 6 mm
Outlet	One grounded 2P outlet, AC 100 V 7A
Weight	Approx. 87 kg

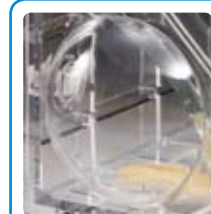


Completely eliminated reinforcement ribs from the observation face to increase visibility. Truly a clear view vacuum glove box.



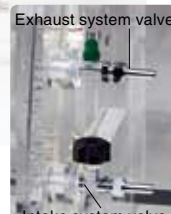
Vacuum gauge is standard equipment. As an option, it is possible to change to a compound gauge or digital type.

Including a convenient pass box. Pass box also is equipped with a vacuum gauge and valve as standard.



Ribs also removed from the doors. Sleek, curved surface structure makes it easy to see inside.

Glove port for bolt stop. Makes a secure seal.



Adopts a ball valve in the exhaust system to ensure exhaust flow amounts. Using a needle valve in the intake system to fine adjustment. Special care to detail has been paid to the clear view.

VACUUM GLOVE BOX VG-800 Type



Code No.	Model
6590	VG-800

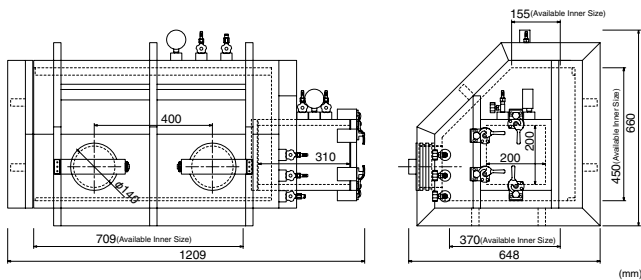
Features

- Take operation machine in and out from leftside door, and take tools and testing material in and out from right pass box. It is designed to resist complete vacuum.
- It has enough strength to resist perfect vacuum.

Specifications

Outer Size (mm)		1209W×648D×660H
Body Available Inner Size (mm)		709W×155D(Upper Side) / 370D(Lower Side)×450H
Pass Box Inner Side (mm)		310W×200D×200H
Valve	Body	2 pcs
	Pass Box	2 pcs
	Glove Port	1 pc
	Pump Connect Size	2 pcs
Vacuum Gauge		Body / Pass Box each one piece (for 0 to -0.1MPa)
Gloves / Glove Band		1 Pair
Glove Port Door		1Pair (when use under decompression)
Weight		Approx.94 kg

* Valve nozzle size is ø9 mm.



This is the first glove box made with all acryl in Japan. Many customer prefer to use it for testing, compound, or measurement field.

The final edition vacuum glove box.VG-800



Note

- The body and pass box are designed to resist perfect vacuum. However, please avoid to vacuum inside rapidly, it may damage or shorten the life span. Please try to slow vacuum.
- Please seal all glove caps when you use this item for vacuum.
- The vacuum gauge indicates the gap between atmospheric pressure and internal pressure.
- Do not operate when inside is under decompression.

VACUUM GLOVE BOX VSC-1000 Type



Code No.	Model
6904	VSC-1000 (with Unit)

Features

- VSC type can meet various customer requests. It is possible to take off all left side door in order to put big size equipment. Also, it has a wide opening front door 250mmx500mm, and a pass box for put in and out of parts or samples (inner size : 310mmx200mmx200mm)
- You can start and stop vacuum pump or control exhaust and gas supply by only press buttons on the unit. It helps you to operate more secure and easier gas replacement.

Note

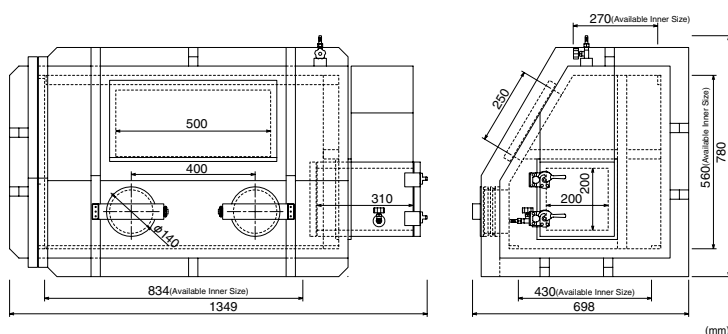
- Do not operate when inside is under decompression.
- We only have 100V specification. It requires additional transformer in order to use it in other countries.

VOLTAGE CONVERSION CHART

P.25

Body Specifications

Outer Size (mm)	1349Wx698Dx780H
Body Available Inner Size (mm)	834Wx270D(Upper Side) / 430D(Lower Side)x560H
Pass Box Inner Side (mm)	310Wx200Dx200H
Body / Pass Box Valve	each one piece, nozzle size is ø9 mm
Gloves / Glove Band	1 Pair
Glove Port Door	1Pair (when use under decompression)
Weight	Approx.145 kg

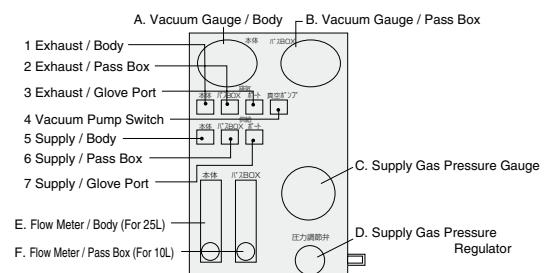


King size glove box. VSC-1000



Unit (Control Box) Specifications

Vacuum Gauge	for Body / Pass Box, each one piece (for 0 to -0.1MPa)	
Pressure Gauge	1 pc (for 0 to 1MPa)	
Regulator	1 pc	
Flow Meter	for Body	1 pc (2.5 to 25L / min.)
	for Pass Box	1 pc (1 to 10L / min.)
Weight	Approx.6 kg	



VACUUM GLOVE BOX (Square Type)



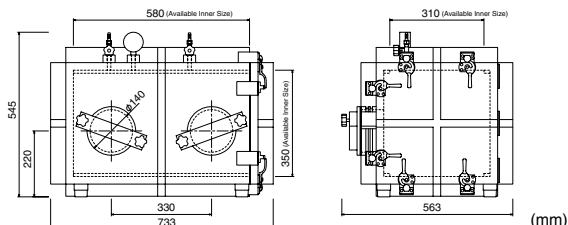
Code No.	Model	Outside Dimensions (mm)
0268	VG-600	733W×563D×545H

Available Inner Size : 580W×310D×350H

* Accessories : Gloves 1 Pair
Valves for Body 2 pcs, Valve for Glove Port 1 pc (Nozzle $\phi 9$ mm)
Vacuum Gauge 1 pc (Range 0 to -0.1MPa, Minimum Scale Unit 0.002MPa)
Glove Covers 2 pcs

* Weight : About 47kg

Specifications



Note

Do not operate when inside is under decompression.



VACUUM GLOVE BOX M-600H TYPE



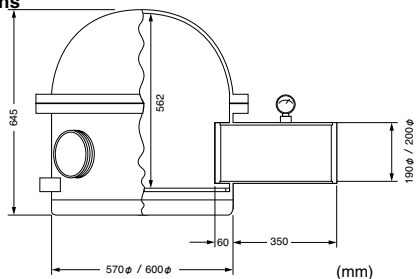
Code No.	Model
6593	M-600H

Specifications : Body : Acrylic (Transparent) Vacuum Gauge 1 pc
Vacuum Valve 2 pcs
Gloves 1 pair
: Pass Box : Acrylic (Transparent) Vacuum Gauge 1 pc
Vacuum Valve 2 pcs

* Vacuum Valve : R1/4 Nozzle 9 ϕ

* Weight : About 41kg

Specifications



Note

Do not operate when inside is under decompression.



VACUUM GLOVE BOX (Dome Type)



Code No.	Model	Outside Dimensions (mm)
0199	400 type	1,135×620×570H

Body Available Volume About 100L

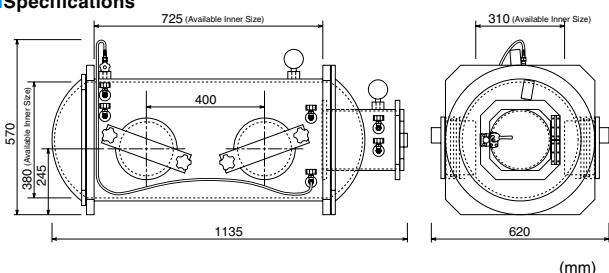
* Accessories : Gloves 2 pairs, O Ring for Glove Stopper 4 pcs, Glove Port Cover 4 pcs,
Glove Port Cover Attach Screw 8 pcs, Intake Valve 2 pcs, Exhale Valve 2 pcs,
Glove Port Valve 2 pcs

* Weight : About 35kg

Features

- It is able to operate under inert gas atmosphere.
- It is possible to take in and out equipment at left side one touch door. Also, it is possible to put in and out tools and testing materials at right side pass box without change inside atmosphere.
- It is designed to do secure vacuum operation at both body and pass box.

Specifications



Note

Do not operate when inside is under decompression.

GLOVE BOX COMPACT VACUUM TYPE



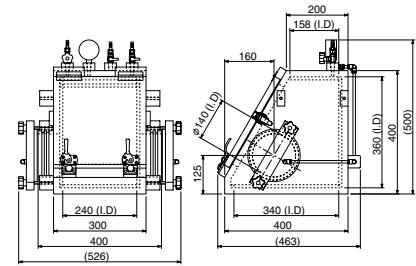
Code No.	Model
25400	VG-C type

Features

- A small size vacuum glove box, so it does not take large space.
- It is made from transparent acrylic which has excellent visibility.
- Glove cover hanger is standard equipment.

Specifications

Outside dimensions (mm)	526W × 463D × 500H
Inside dimensions (mm)	240W × 340D/158D × 360H
Inside volume	Approx. 25L
Inside Diameter of the Glove Port	140mm
Vacuum gauge	For 0 to -0.1 MPa
Intake system valve of the Main Unit	Needle Valve; Nozzle diameter 9 mm
Exhaust system valve of the Main Unit	Ball Valve; Nozzle diameter 9 mm
Exhaust system valve of the Glove Port	Ball Valve; Nozzle diameter 9 mm
Main Unit Material	Made of acrylic resin
Packing Material	Made of silicon
Glove Material	Made of natural rubber
Tubes	Made of nylon Outside diameter 8 mm x inside diameter 6 mm
Weight	Approx. 20 kg



COMPACT TYPE OIL-SEALED ROTARY VACUUM PUMP

Code No.	Model	Outer Size (mm)
92701	GLD-051	165.5×399×222.7

Features

- Double-step evacuate style is better than single-step evacuate style.
- Low noise and vibration.
- It has countercurrent system structure in order to prevent oil backward flow into vacuum chamber when it suddenly stop operating by accident.
- It has steady evacuate speed because of the forced oil supply system.
- It is possible to work from atmospheric pressure.
- It is easy to maintenance with knock pin to connect inner parts, and flange motor inside.

Specifications

Reach Pressure	G.V. closed	0.67 Pa
	G.V. open	6.7 Pa
Power Source	100V	
Electric Consumption	200W	
Weight	13.9 kg	
Applied Oil	SMR-100	
Oil Volume	500 to 800ml	
Intake Tube Diameter	KF-25	
Applied Temperature	7 to 40°C	



Note

- We only have 100V specification.
- It requires additional transformer in order to use it in other countries.

VOLTAGE CONVERSION CHART



COMPACT TYPE OIL-SEALED ROTARY VACUUM PUMP

Code No.	Model	Outer Size (mm)
27000	GLD-136C	170×487.5×249.5

Features

- Double-step evacuate style is better than single-step evacuate style.
- Low noise and vibration.
- It has countercurrent system structure in order to prevent oil backward flow into vacuum chamber when it suddenly stop operating by accident.
- It has steady evacuate speed because of the forced oil supply system.
- It is possible to work from atmospheric pressure.
- It is easy to maintenance with knock pin to connect inner parts, and flange motor inside.

Specifications

A Practical Effect Evacuate Speed	135L / min(50Hz) 162L / min(60Hz)	
Reach Pressure	G.V. closed	0.67 Pa
	G.V. open	6.7 Pa
Power Source	100-120V / 200-240V	
Electric Consumption	400W	
Weight	27 kg	
Applied Oil	SMR-100	
Oil Volume	1,000ml	
Intake Tube Diameter	KF-25	
Applied Temperature	7 to 40°C	



Note

- We only have 100V specification.
- It requires additional transformer in order to use it in other countries.

VOLTAGE CONVERSION CHART



GAS REPLACEABLE GLOVE BOX G TYPE



Code No.	Model
6903	G type

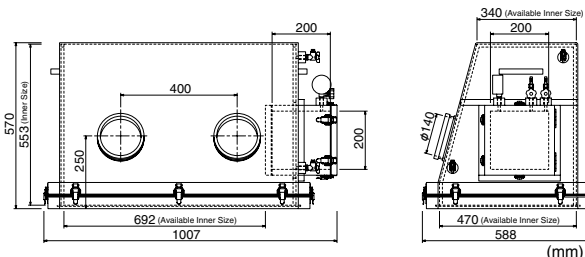
Features

- The body and bottom are able to separate completely, so you can install heavy weight or maximum volume equipment. Also, it equips pass box as standard, so you can work more speedily under steady condition.
- G type is designed and manufactured for installing heavy equipment. You can completely take off upper parts that locating at 40mm above from bottom parts.



Specifications

Outer Size (mm)	1007Wx588Dx570H
Body Available Inner Size (mm)	692Wx340D(Upper Side) / 470D(Lower Side)x553H
Pass Box Inner Side (mm)	200Wx200Dx200H
Spigot for Body Gas Replacement	2 pcs (ø6 mm Tube One-Touch Type)
Valve for Pass Box	2 pcs (nozzle size ø9 mm)
Vacuum Gauge for Pass Box	1 pc (for 0 to -0.1MPa)
Gloves / Glove Band	1 Pair
Weight	Approx.31 kg



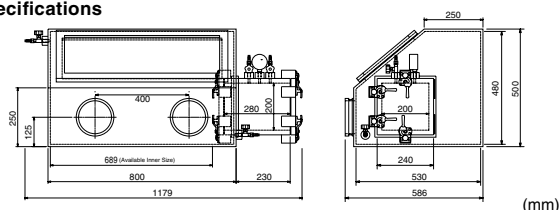
GAS REPLACEABLE GLOVE BOX



Code No.	Model
6591	DX- II

- * Accessories : Gloves 1 pair, Needle Valves 4 pcs, Vacuum Gauge 1 pc (Pass Box)
- * Pressure Resistance : Body : Both positive and negative pressure are 1.961kPa
Pass Box : Positive Pressure 10kPa Negative Pressure -0.1 MPa
- * Weight : About 39 kg
- * Size of Body Door Opening : 680x270mm

Specifications



Features

- This gas replaceable glove box has excellent visibility.
- Pass box is designed to resist vacuum condition.

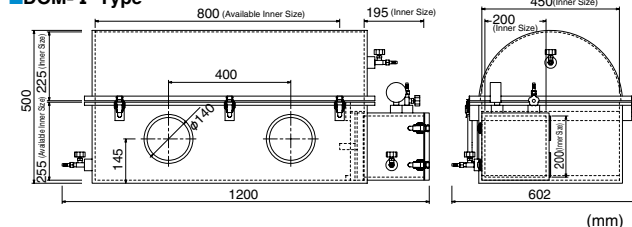
DOME TYPE GAS REPLACEABLE GLOVE BOX



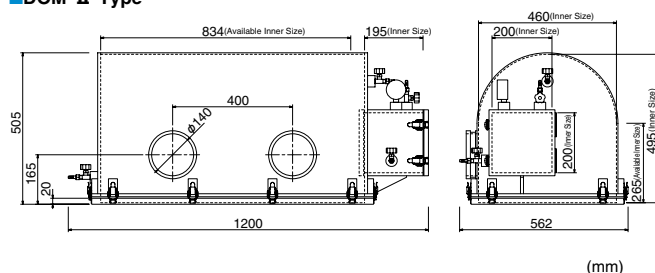
Code No.	Model	Specifications
6103	DOM- I	Standard Type
6104	DOM- II	Purge Type

- * Accessories : Vacuum Gauge x 1, Valve x 4 (Nozzle ø9 mm)
Gloves x 1 pair, Glove Band x 2 pcs
- * Pressure Resistance : Body : Both positive and negative pressure are 1.961kPa
Pass Box : Positive Pressure 0.01MPa Negative Pressure -0.1 MPa
- * Weight : DOM- I : About 29 kg DOM- II : About 23 kg

DOM- I Type



DOM- II Type



Features

- Purge type gas replaceable glove box made of all acrylic which has excellent visibility.
- DOM- I type can purge from its middle and DOM- II type can purge from bottom side.
- Pass box is designed to resist vacuum condition.
DOM- I model equips slide type door, and DOM- II model equips seal handle and open and close type door for pass box.

STERILISE BOX (with Sterilize Lamp Resist Plate)

Code No.	Model	Outer Size (mm)
0228	U-DX type	995W×575D×530H

* Accessories : Gloves 1 pair, air circulation unit 1 set, gas charge spigot x2
sterilize lamp / fluorescent lamp : each 1 pc (body 1 pc), inner outlet 2 double-style,
pass box : (inner size) 170W×190D×190Hmm
fluorescent lamp 10W, ultraviolet rays 10W, fan 50/60Hz, 5/4W
* HEPA capsule filter can be sterilized by ethylene oxide gas.
* Weight : About 18 kg

● Features

- We use sterilize lamp resist plate to prevent degradation caused by the sterilize lamp.
- One unit has function as a germ free box or dry box.
- Easy to install a microscope or equipment with a large opening.
- DX type equips HEPA capsule filter (Dust-collecting efficiency 99.97%, 0.3μm) and acrylic housing which can store silica-gel or active carbon, always keep dry and germ free air circulate inside.
- The door with key, so you can keep safe operation.

■ Usage as A Drybox

Normally only use silica-gel to circulate dry air, but it is more efficient if you add nitrogen gas. (Please attach reducing valve for gas cylinder.)

1. Open upper left side valve.
2. Introducing gas to lower right side valve through 6ø tube.
3. The gas may resch to full for 3-5 minutes, then stop gas and close both valves.

■ Usage as A Sterilized Box

It is enough to get it work by only using sterilize lamp, but it is possible to always circulate dry and germ free air by adding air filter unit and silica-gel.

1. Close body door, then turn on the switch of sterilize lamp and fan.
2. Please attach cover plate when you turn on the sterilize lamp.
3. Please close inner door, then open outer door when you use right side pass box. Similarly, close outer door then open inner door.
4. Please change the silica-gel and filter when you find it is dirty or its color is changed.

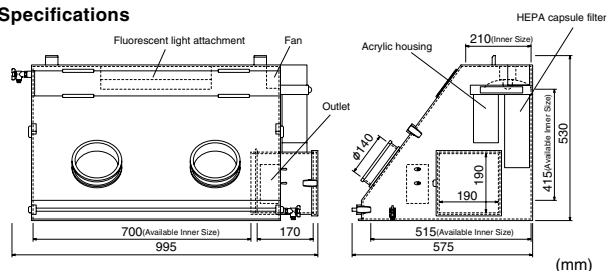
● Note

- We only have 100V specification.
- It requires additional transformer in order to use it in other countries.

It Prevents Degradation Caused by Sterilize Lamp. Use with Safety.



■ Specifications



VOLTAGE CONVERSION CHART  P.25

STERILISE BOX (Nomal MA Plate)

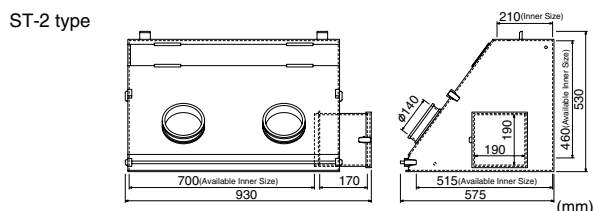
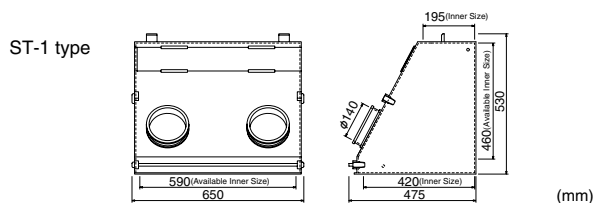
Code No.	Model	Accessory
0186	ST-1 type	Gloves 1 pair
0187	ST-2 type	Gloves 1 pair

* Weight ST-1 Type : About 11 kg
ST-2 Type : About 15 kg

● Features

- It has large opening for easy installation. Also, it has lock and key for safe operation.
- It is very economical because you only choose required parts.

■ Specifications



A Standard Sterilize Box with Simple Design



ST-1 type



ST-2 type

Easy Search on The Website

You can check more details of all items listed on Sanplatec catalogue from our official website. Not only check products information, but also it contains multiple convenient tools, such as search engine for plastic chemical resistance and movies of products usage.

sanplatec.co.jp/en/index |

Search 



GLOVE BOX COMPACT WITH STERILIZATION LAMP



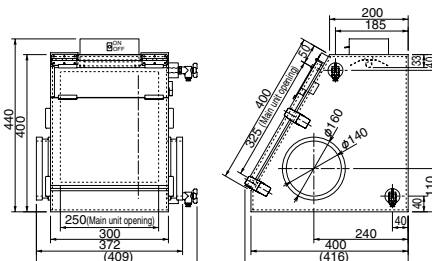
Code No.	Model
25401	S-GBC type
25429	Replacement sterilization lamp

Features

- Compact and lightweight so it can be setup anywhere; easy to move.
- Solves the problem of acrylic plate degradation caused by the sterilization lamp.
- Replacement volume is small, so replacement gas can be conserved.

Specifications

Outside dimensions (mm)	409W × 416D × 440H
Inside dimensions (mm)	290W × 208D/390D × 362H
Inside volume	Approx. 35L
Main unit opening (mm)	250 × 325
Valves	2 locations; connecting tube opening outside diameters 6 mm; one-touch type
Sterilization lamp	one, 4W
Main unit material	Acrylic (sterilization lamp specification plate)
Weight	Approx. 5.8 kg



●Note We only have 100V specification.
It requires additional transformer in order to use it in other countries.

VOLTAGE CONVERSION CHART

▶▶ P.25

Compact! Lightweight!

GLOVE BOX COMPACT



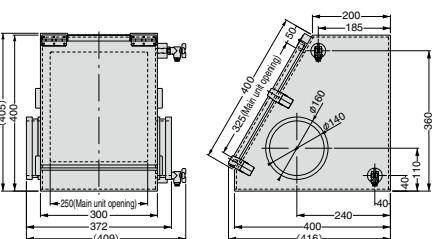
Code No.	Model
18003	GBC type

Features

- Glove ports are disposed on the sides to enable a compact size.
- Compact and lightweight so it can be setup anywhere; easy to move.
- Replacement volume is small, so replacement gas can be conserved.

Specifications

Outside dimensions (mm) (including projecting portions)	409W × 416D × 405H (Reference)
Inside dimensions (mm)	290W × 190D/390D × 390H
Main unit opening (mm)	250 × 325
Valves	2 locations; connecting tube opening outside diameters 6 mm; one-touch type
Weight	Approx. 5.5 kg
Main unit material	Acrylic



Compact! Lightweight!! You can put it in a fume hood!!

MOBILE LAB SPACE CUBIC TYPE



Code No.	Model	Weight	Amount
27001	MBLS-S	1.7 kg	1 Unit
26890	Spare gloves	—	10 pcs

* Size (mm) : Bottom / 700 × 700, Upper / 450 × 700, Height / 450

Features

- It is compact yet comfortable to use with functional design.
- Easy to carry, speedy setting.
- Quickly to transform bag to box shape. A folding type glove box for instant use.
- It is able to completely open front cover which supports easy equipment installation. It has small opening at side for installing small materials.
- It has exclusive use hole for gas replacement.
- Easy to attach and remove gloves, and it saves storage space by folding it.

Note

Attached gloves and spare gloves are instant gloves. Please purchase gloves for sterilize box at P.15 for gas replacement.



Finish installation by only open it.



It is able to widely open front with a zip. Also, it has convenient hook.



It equips zip type opening at side.



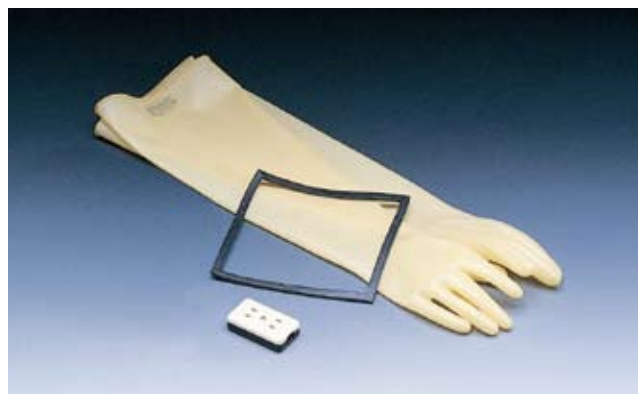
A vent of gas replacement. (14ø)



Compact storage by hold it after using. Also, easy to carry.

SPARE PARTS for STERILIZED BOX

Code No.	Model	Specifications
0190	Sterilized Lamp	10W
0191	Fluorescent Light	10W
0192	Electrical Outlet	2 double-style
0193	Glove	1 pair
0194	Sealing for Body	for ST-1 Type
0195	Sealing for Body	for ST-2 Type
0196	Sealing for Pass Box	—
0234	Gas Injection Unit	4m 6ø Tube / IN OUT Valve x 2

**Optional Gloves for Glove Boxes****NEW LONG ELAST BUTYL**

Code No.	Model
26068	Diameter 6 Inch

* Thickness : 0.6 mm
* Total Length : 800 mm

Features

- Triple layer structure of special composition rubber coating has excellent performance against sunshine and ozone.
- It has tiny restitution, soft and flexible.
- It has excellent performance to block gas and requid.

Material

Three rayer structure
Foundation / Chloroprene (CR) Middle / Butyl (IIR) Surface / Chloroprene (CR)

Note

Please ask if you are not sure about instration.

Optional Gloves for Glove Boxes**NEW LONG ELAST HYPALON**

Code No.	Model
26081	Diameter 6 Inch

* Thickness : 0.4 mm
* Total Length : 800 mm

Features

- It has excellent performance to against abrasion.
- Suitable for optional glove of glove box.

Material

Chlorosulfonated polyethylene (CSM)

Note

Please ask if you are not sure about instration.

More comfortable when use glove box**GLOVE BOX INNER GLOVE (Fit Long Glove)**

Code No.	Model	Amount (pair)
26227	LMN-100	50

* Material : Polyolefin elastomers (POE)

Features

- Disposable type long glove.
- It use flexible material, it can fit for even bigger hand.
- It can absorb sweat, so don't have to worry about get outer glove dirty.
- It also prevent smell and allergy from rubber glove.

Specifications Length : 450 mm

**Usage**

for inner glove when using glove box.

Suitable when operating simple glove box**GLOVE FREE PORT**

Code No.	Model	Amount
26571	GRP-1	2

* Material : Insert Head NBR

Features

- One-touch attachment to Sanplatec glove boxes.
- You are able to use it as a simple glove box by only attach this item.

SANPLATEC® Acrylic Vacuum Desiccator Series



SNH type code : 0226
Outer size : 412W×343D×620Hmm
SNH-TAP type code : 4710
Outer size : 412W×375D×620Hmm
SNW type code : 0227
Outer size : 600W×453D×600Hmm
SNW-TAP type code : 4711
Outer size : 600W×453D×600Hmm

▶ P.18



YB-1 type code : 0177
Outer size : 435W×331D×380Hmm
YB-2 type code : 0178
Outer size : 435W×331D×480Hmm
YB-3 type code : 0179
Outer size : 445W×341D×590Hmm

▶ P.18



SNO type code : 0390
Outer size : 320W×223D×470Hmm
SNO-TAP type code : 4713
Outer size : 320W×255D×470Hmm

▶ P.18



SB-II type code : 0391
Outer size : 278W×286D×386Hmm
SB-II-TAP type code : 4714
Outer size : 278W×296D×386Hmm

▶ P.19



SB-II P type code : 0230
Outer size : 306W×286D×386Hmm

▶ P.19



SB type code : 0181
Outer size : 248W×256D×328Hmm

▶ P.19



SNS type code : 0225
Outer size :
328W×414D×228Hmm

▶ P.19



UB type code : 0175
Outer size : 475W×400D×236Hmm

▶ P.20



UB-D type code : 16532
Outer size : 528W×400D×259Hmm

▶ P.20



MB type code : 0176
Outer size : 400W×321D×363Hmm

▶ P.20



PS type code : 0392
Outer size : 198ø×310Hmm
PB type code : 0252
Outer size : 258ø×455Hmm
PS-II type code : 4712
Outer size : 298ø×435Hmm

▶ P.21



Square type code : 19926
Inner size : 60W×25D×86Hmm
Round type 50ml code : 19927
Inner size : ø48×26Hmm
Round type 100ml code : 19928
Inner size : ø48×56Hmm
Round type 150ml code : 19929
Inner size : ø48×86Hmm
Round type 300ml code : 19930
Inner size : ø48×186Hmm
Round type 500ml code : 19931
Inner size : ø48×276Hmm

▶ P.21

SANPLATEC® Desiccator Series



**SUPER DRY KEEPER
EXTRA**(Auto desiccator)
code : 25015

▶ **P.23**

**SUPER DRY KEEPER
STANDARD**
(Auto desiccator)
code : 0025

▶ **P.23**


DRY-KEEPER

AUTO C-type
code : 0001~0003
C-type(Non-auto type)
code : 0030~0032

▶ **P.24**


**DRY-KEEPER
AUTO A-type**
code : 0010~0011

▶ **P.24**


**DRY-KEEPER
A-type**(Non-auto type)
code : 0040~0041

▶ **P.24**

Also a transformer is available



i-BOX
(Auto-type Desiccator)
code : 0151~0155

▶ **P.25**

i-BOX
(Non-Auto-type Desiccator)
code : 0316~0320

▶ **P.25**


D-BOX
(Auto-type Desiccator)
code : 0150

▶ **P.26**


E-BOX
(Non-Auto-type Desiccator)
code : 0315

▶ **P.26**


MINI DESICCATOR CABINET
code : 0050~0051

▶ **P.26**

MINI DESICCATOR CABINET
Smoke-transparent type
code : 0056~0057

▶ **P.26**


AIRLESS PUMP
code : 26660

▶ **P.22**

EXCLUSIVE USE PACK

code : 26661~26662

▶ **P.22**


**POLYCARBONATE
VACUUM DESICCA-
TOR**

code : 0062~0065
code : 4705~4706

▶ **P.22**


SUKIMA STOCKER

code : 26891

▶ **P.27**


MOBILE DESICCATOR

code : 26265

▶ **P.27**

ACRYLIC VACUUM DESICCATOR



Code No.	Model
0226	SNH type
4710	SNH-TAP type
0227	SNW type
4711	SNW-TAP type

* TAP type equips 100V2P outlet inside and switch outside.

Usage

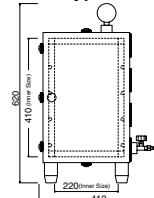
Please use it for storage, experiment, and gas replacement.

Specifications

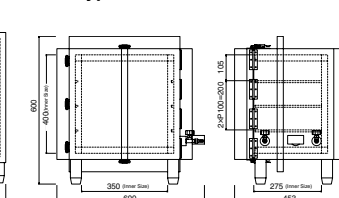
	SNH	SNH-TAP	SNW	SNW-TAP
Outer Size (mm)	412W×343D×620H	412W×375D×620H	600W×453D×600H	600W×453D×600H
Available Inner Size (mm)	220W×260D×410H	220W×252D×410H	350W×275D×400H	350W×272D×400H
Vacuum gauge	1 pc, For 0 to -0.1 MPa			
Valves	2 pcs ; Nozzle diameter ø9 mm			
Packing	Made of silicon			
Rack shelves	with 3 plates, plate thickness 5mm		with 2 plates, plate thickness 5mm	
Weight	Approx. 19kg		Approx. 38kg	



SNH type



SNW type



ACRYLIC VACUUM DESICCATOR



Code No.	Model
0177	YB-1 type
0178	YB-2 type
0179	YB-3 type
0180	Spare rack shelves (for the YB type)

* 100 V power supply set inside the container. (Optional)

Features

- Rack shelves can be added or subtracted enabling you to increase or decrease the number rack shelves for your particular needs.
- YB-1 type: Up to 4 levels YB-2 type: Up to 6 levels YB-3 type: Up to 8 levels

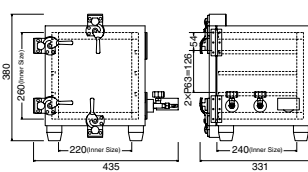
Specifications

	YB-1	YB-2	YB-3
Outside dimensions(mm)	435W×331D×380H	435W×331D×480H	445W×341D×590H
Usable inside dimensions (mm)	220W×240D×260H	220W×240D×360H	220W×240D×460H
Vacuum gauge	One piece; For 0 to -0.1 MPa		
Valves	2 pcs.; Nozzle diameter ø9 mm		
Packing	Made of silicon		
Rack shelves	2 racks as accessories	3 racks as accessories	4 racks as accessories
Weight	Approx. 16 kg	Approx. 18 kg	Approx. 26 kg

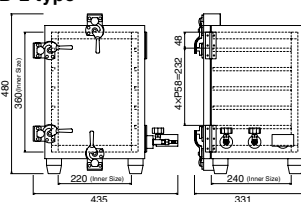
Secure air-tightness through high-level bonding.



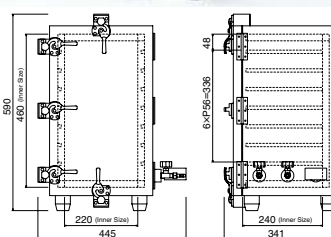
YB-1 type



YB-2 type



YB-3 type



ACRYLIC VACUUM DESICCATOR



Code No.	Model
0390	SNO type
4713	SNO-TAP type

* 100 V 2P outlet is provided on the inside of the container at the bottom left at the back surface, and a switch is provided on the outside of the container on the TAP type.

Features

- Vacuum desiccator with a compact design for sampling storage, and storage and control of sensors, optical jigs and gauges and the like in the best positions.

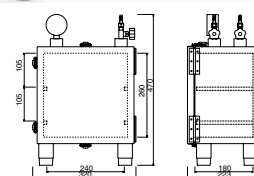
Specifications

	SNO type	SNO-TAP type
Outside dimensions (mm)	320W×223D×470H	320W×255D×470H
Usable inside dimensions (mm)	240W×180D×260H	240W×152D×260H
Vacuum gauge	One piece; For 0 to -0.1 MPa	
Valves	2 pcs.; Nozzle diameter ø9 mm	
Packing	Made of silicon	
Rack shelves	2 racks; rack thickness: 5 mm	
Weight	Approx. 11 kg	

Mid-sized desiccator for a wide range of uses



SNO type



ACRYLIC VACUUM DESICCATOR



Code No.	Model
0391	SB-Ⅱ type
4714	SB-Ⅱ -TAP type

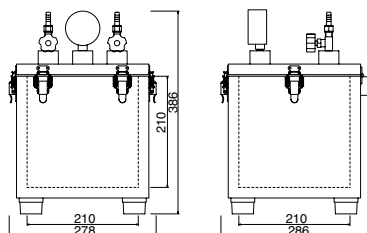
* TAP type equips 100V2P outlet inside and switch outside.

Features

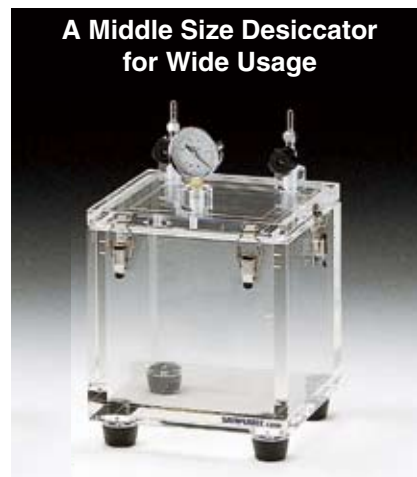
A compact size desiccator for sampling storage, sensor, optical tool, and gauge parts storage.

Specifications

	SB-Ⅱ type	SB-Ⅱ -TAP type
Outer Size(mm)	278W×286D×386H	278W×286D×386H
Available Inner Size (mm)	210W×210D×210H	210W×182D×210H
Vacuum gauge	1 pc, For 0 to - 0.1 MPa	
Valves	2 pcs ; Nozzle diameter ø9 mm	
Packing	Made of silicon	
Weight	Approx. 9kg	



A Middle Size Desiccator for Wide Usage



PORTABLE VACUUM DESICCATOR



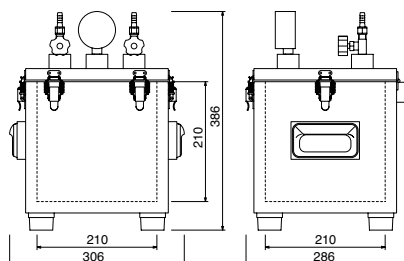
Code No.	Model
0230	SB-Ⅱ P type

Features

Easy to carry, adding handle with vacuum desiccator SB-Ⅱ type.

Specifications

Outer Size(mm)	306W×286D×386H
Inner Size (mm)	210W×210D×210H
Vacuum gauge	1 pc, For 0 to - 0.1 MPa
Valves	2 pcs ; Nozzle diameter ø9 mm
Packing	Made of silicon
Weight	Approx. 9kg



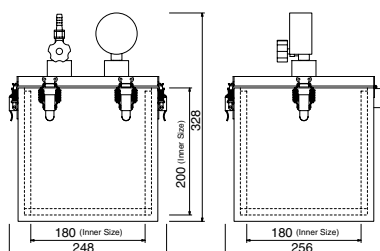
ACRYLIC VACUUM DESICCATOR



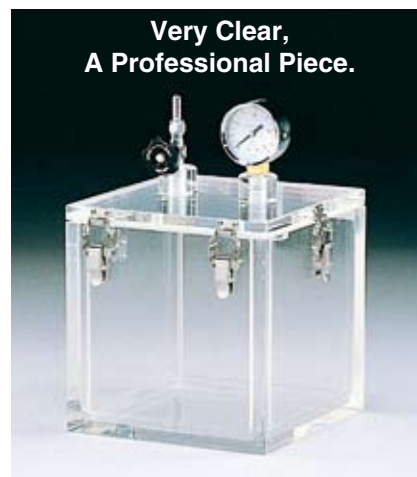
Code No.	Model
0181	SB type

Specifications

Outer Size(mm)	248W×256D×328H
Available Inner Size (mm)	180W×180D×200H
Vacuum gauge	1 pc, For 0 to - 0.1 MPa
Valves	2 pcs ; Nozzle diameter ø9 mm
Packing	Made of silicon
Weight	Approx. 4.5kg



Very Clear, A Professional Piece.



ACRYLIC VACUUM DESICCATOR



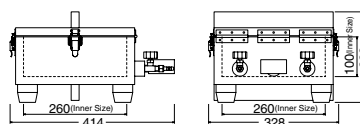
Code No.	Model
0225	SNS type

Usage

Please use it for storage, experiment, and gas replacement.

Specifications

Outer Size(mm)	328W×414D×228H
Available Inner Size (mm)	260W×260D×100H
Vacuum gauge	1 pc, For 0 to - 0.1 MPa
Valves	2 pcs ; Nozzle diameter ø9 mm
Packing	Made of silicon
Rack shelves	None
Weight	Approx. 9kg



ACRYLIC VACUUM DESICCATOR



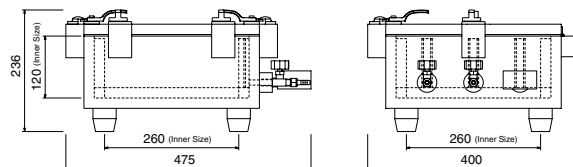
Code No.	Model
0175	UB type

Features

It can prevent liquid get into pump when vacuum inside with full of liquid.

Specifications

Outer Size(mm)	475W×400D×236H
Available Inner Size (mm)	260W×260D×120H
Vacuum gauge	1 pc, For 0 to - 0.1 MPa
Valves	2 pcs ; Nozzle diameter ø9 mm
Packing	Made of silicon
Weight	Approx. 12kg



Also available for package testing



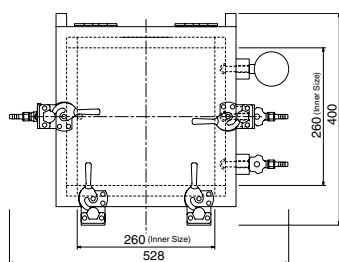
ACRYLIC VACUUM DESICCATOR(with Drain Valve)



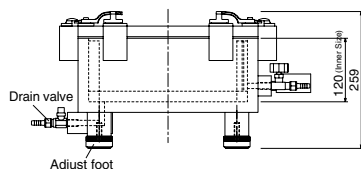
Code No.	Model
16532	UB-D type

Features

- It adds a drain valve and adjust foot.
- Very easy to do drainage.



Drainage without lift up the body by using drain valve and adjust foot.



Easy Drainage



Specifications

Outer Size(mm)	528W×400D×259H
Available Inner Size (mm)	260W×260D×120H
Vacuum gauge	1 pc, For 0 to - 0.1 MPa
Valves for Air	2 pcs ; Nozzle diameter ø9 mm
Valves for Drain	1 pcs ; Nozzle diameter ø9 mm
Packing	Made of silicon
Weight	Approx. 12kg

ACRYLIC VACUUM DESICCATOR



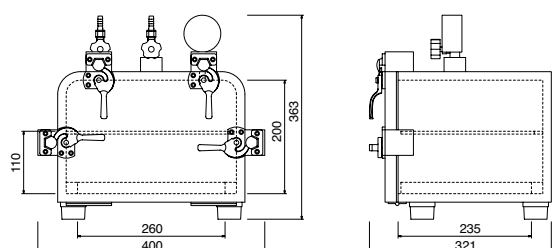
Code No.	Model
0176	MB type

Features

- Its shelf board is replaceable, and you can adjust interval between each shelf board.(Until 2 Levels)

Specifications

Outer Size(mm)	400W×321D×363H
Available Inner Size (mm)	260W×235D×200H
Vacuum gauge	1 pc, For 0 to - 0.1 MPa
Valves	2 pcs ; Nozzle diameter ø9 mm
Packing	Made of silicon
Rack shelves	with 2 plates, plate thickness 5mm
Weight	Approx. 11kg



For Quick N2 Gas Replacement



VACUUM DESICCATOR PIPED TYPE



Code No.	Model
0392	PS type
0252	PB type
4712	PS-II type

* We accept order to make special size.

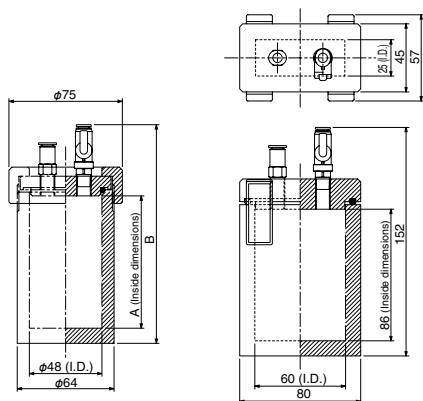
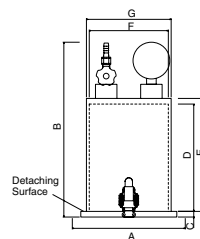
■ Specifications

	PS type	PB type	PS-II type
Outside dimensions(mm)	198ø×310H	258ø×455H	298ø×435H
Usable inside dimensions (mm)	140ø×190H	190ø×330H	234ø×300H
Vacuum gauge	One piece; For 0 to -0.1 MPa		
Valves	1 pcs.; Nozzle diameter ø9 mm		
Packing	Made of nitrile rubber		
Weight	Approx. 2 kg	Approx. 3 kg	Approx. 5 kg

■ Dimensions

	A	B	C	D	E	F	G
PS type	198ø	310	10	190	200	140ø	150ø
PB type	258ø	455	15	330	340	190ø	200ø
PS-II type	298ø	435	20	300	315	234ø	250ø

Available for 360° Observation

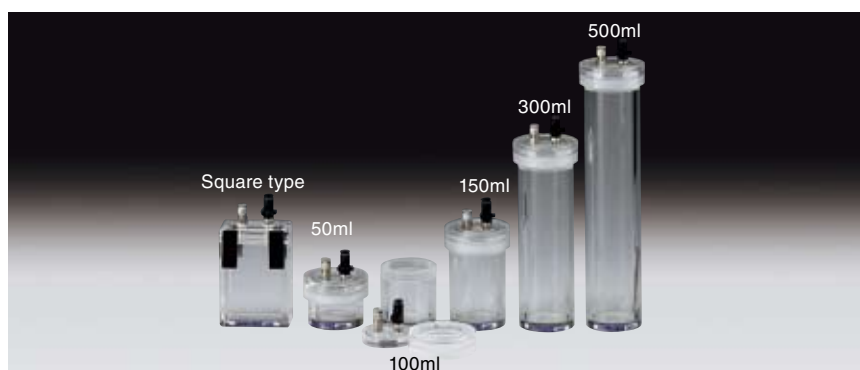


■ Dimensions

Model	A	B
50ml	26	86
100ml	56	116
150ml	86	146
300ml	186	246
500ml	276	336

● Features

- Portable small size acryl vacuum desiccator.
- It is possible to do decompress gas replacement because of the standard equipped bulb.
- The check bulb works as a relief bulb, so it is safe for gas replacement even the positive pressure is occur.



GAS REPLACEABLE PORTABLE VACUUM SAMPLING BOX



Code No.	Model	inside dimensions (mm)
19926	Square type	60 × 25 × 86H
19927	Round type 50ml	ø48 × 26H
19928	Round type 100ml	ø48 × 56H
19929	Round type 150ml	ø48 × 86H
19930	Round type 300ml	ø48 × 186H
19931	Round type 500ml	ø48 × 276H

■ Specifications

	Square type	Round type				
		50ml	100ml	150ml	300ml	500ml
Main Unit Material	Made of acrylic resin					
Packing Material	Silicon	NBR				
Ball Valve Connector	Outer diameter ø6mm tube, One touch type.					
Checking Valve Connector	Outer diameter ø6mm tube, One touch type.					
Checking Valve Working Pressure	10kPa					
Weight	380g	200g	250g	300g	470g	620g

● Features

- Hand pump 36 has tip radius 6ø.
- Hand pump 36 can exhaust until -84KPa (-630mmHg).



● Features

- It is available to check vacuum reach point.



PORTABLE VACUUM PUMP

Code No.	Model
9161	Hand pump 36

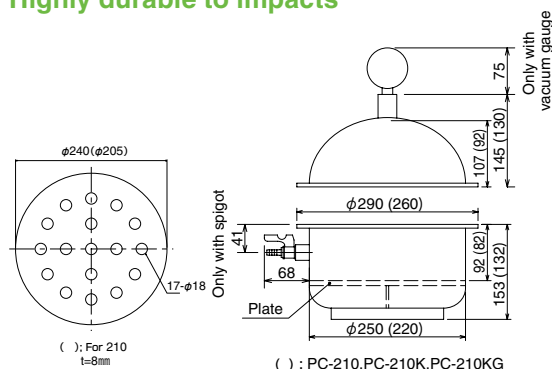
VACUUM GAUGE ADAPTOR



Code No.	Model
9219	GAD-1

* Pipe connector is one-touch type.

Highly durable to impacts



Features

- Main unit and lid are completely transparent. You can instantly know the status of items that are stored and when replacing silica gel.
- Dry seal type uses an O-ring. Eliminated the trouble of applying grease.
- Maximum strength in the transparent resins. Difficult to crack even if dropped, so you can use it with confidence.
- The ceramic plate is heat resistant, corrosion resistant, has an anti-sticking property and won't scratch.
- As a feature of PC, it has strong tensile strength, is durable to impacts, and is heat-resistant.

POLYCARBONATE VACUUM DESICCATOR



Code No.	Model	Effective inside Diameter (mm)	Specifications
0062	PC-210K	ø200	With Spigot
0063	PC-250K	ø230	With Spigot
0064	PC-210	ø213	No Spigot
0065	PC-250	ø243	No Spigot
4705	PC-210KG	ø200	With Spigot, Vacuum Gauge
4706	PC-250KG	ø230	With Spigot, Vacuum Gauge
95001	Spigot PC-210, 250	—	Spigot (Spare), Nozzle is ø9 mm, Made of brass
0066	Plate for PC-210(K, KG)	—	Plate (Spare), Made of strong ceramic
0067	Plate for PC-250(K, KG)	—	Plate (Spare), Made of strong ceramic

* Each type has a dedicated ceramic plate

* Spigot models have a nozzle diameter of ø9 mm.

* Vacuum gauge models have a vacuum gauge of 0 to -0.1 MPa (minimum scale units: 0.002 MPa).

AIRLESS PUMP

Code No.	Model	Outer size (mm)	Weight (g)
26660	VU-01	ø72x108H	300

- * Materials: Body: ABS, Cap: PP, Absorb Hole: Silicon Rubber
- * Need Batteries (This product includes batteries)
- * Decompression until -40KPa (depend on shape of material)

EXCLUSIVE USE PACK



Code No.	Model	Outer size (mm)	Amount (pcs)
26661	VP-M	230x270	10
26662	VP-S	230x200	10

- * Material: PE, Polyamide Lamination
- * Decompression level depends on the position of inside material.
- * Sheet type valve, including writing space.
- * Proper temperature to use: -20°C to 40°C



[How to Use]

An absorb hole



It starts vacuum air from bottom of airless pump.



Set Airless pump on absorb hole of exclusive use pack.



After press a switch at top of the pump, it starts vacuum.



This pump vacuum inside air along tiny ditch of the pack.



The pump automatically stop vacuum after decompression.
* It will automatically turn off the light.



An exclusive use pack keep vacuum condition after finish vacuum.
* It depends on inside material, but normally it can keep vacuum condition for a week.

[Where to Use]



To store powder or silica gel!

Easy and compact storage without using desiccator. Protect testing material from humidity, steady storage. Of course you can use this as a transportation pack.



To transport reagent or specimen!

Inside material sticks with pack, while protected from outside environment. It has better effect to reduce temperature.

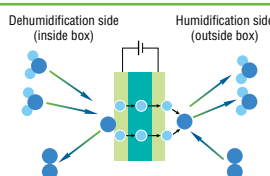
Other advantages

- It is able to save space with standized container.
- Also seal smell.
- Easy to check inside materials with transparent bag.

A Desk-Top Auto Desiccator Resolves Atmospheric Humidity with Solid Polymer Film

SUPER DRY-KEEPER

■ Dehumidification theory of Super Dry Keeper Extra and Super Dry Keeper.



The positive pole (dehumidification side) $\text{H}_2\text{O} \rightarrow 2\text{H}^+ + \frac{1}{2}\text{O}_2 + 2\text{e}^-$

The negative pole (humidification side) $2\text{H}^+ + \frac{1}{2}\text{O}_2 + 2\text{e}^- \rightarrow \text{H}_2\text{O}$

■ Porous Electrode
■ Solid Polymer Film

It is a table top auto desiccator with a digital adjustor.

SUPER DRY KEEPER EXTRA (Auto Desiccator)

PVC ABS

NEW

Code	Name	Shelf board
25015	Extra	3
25016	Loader cable	—
0004	Spare Shelf board (for C-3)	—

● Features

- The moisture control by ON-OFF control of a dehumidifier is possible. (30% RH to atmospheric humidity)
- Measured values, set values, etc. are displayed on the LC monitor in 11 segments.
- Timer operation of "start or stop of control after the predefined period" is possible.
- (* The air circulation motor is constantly operated)
- Exchanges of data with PC is attained by an optional loader cable. (Software can be downloaded from <http://www.toho-inc.com/english/soft/index.html>)
- The shelf board can be adjusted in 15 steps with intervals of 28mm.

● Note

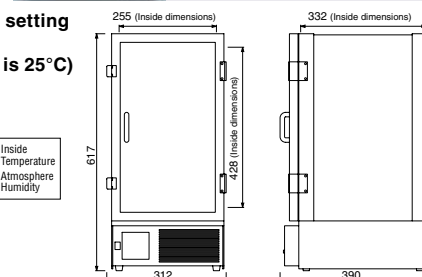
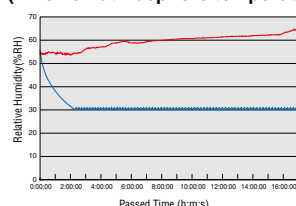
- We only have 100V specification.
- It requires additional transformer in order to use it in other countries.
- The humidification function is not included in the machine.

■ Specification

External dimensions	312 (W) × 390 (D) × 617 (H) mm
Effective inner dimensions	255 (W) × 332 (D) × 428 (H) mm
Dehumidifier	Solid molecular electrolytic film
Dehumidification capacity	4g/day *
Humidity control method	ON-OFF control
The humidity control range	30% RH to atmospheric humidity
Humidity sensor	Capacitance type polymer sensor
Humidity sensor accuracy	±3% RH (25 degrees C, 5 to 95% RH)
Power source	Single-phase AC100V 50 / 60Hz
Power consumption	18W
Weight	Approx. 7kg
Operating ambient temperature	0 to 40 degrees C

* This is an initial value at 30 degree C of temperature, 60% of humidity, and in RH. (Dehumidification capacity declines gradually as use. Please be informed that the degree of deterioration varies with the operating environment or conditions.)

■ Humidity change inside of box with setting amount 30%RH. (When an atmosphere temperature is 25°C)



VOLTAGE CONVERSION CHART ▶▶ P.25

SUPER DRY KEEPER STANDARD (Auto Desiccator)

PVC ABS

Code	Name	Shelf board
0025	Standard	3
0004	Spare Shelf board (for C-3)	—

* The inside humidity is slightly different depending on the set room temperature and usage conditions.

● Features

- Full automatic system. Replacement of silica gel is unnecessary. Humidity inside the refrigerator at normal temperature is maintained at 30% to 40%RH, and is perfect for long-term storage.
- Functions and strength are improved markedly by combining molded parts.
- Dehumidification capability is improved substantially by adoption of a fan for inside air circulation convection flow.
- Shelf plates can be adjusted in 15 steps at 28mm intervals to match the size of the stored items.
- Slim vertical type design does not take up space.

● Note

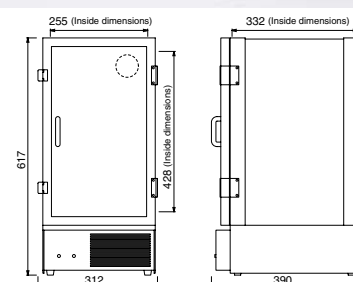
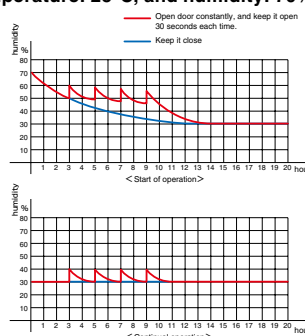
- We only have 100V specification.
- It requires additional transformer in order to use it in other countries.

■ Specification

External dimensions	312 (W) × 390 (D) × 617 (H) mm
Effective inner dimensions	255 (W) × 332 (D) × 428 (H) mm
Dehumidifier	Solid molecular electrolytic film
Dehumidification capacity	4g/day *
Power source	Single-phase AC100V 50 / 60Hz
Power consumption	8W
Weight	Approx. 7kg
Operating ambient temperature	0 to 40 degrees C

* This is an initial value at 30 degree C of temperature, 60% of humidity, and in RH. (Dehumidification capacity declines gradually as use. Please be informed that the degree of deterioration varies with the operating environment or conditions.)

■ Dehumidification performance of Super dry keeper under condition of surrounding temperature: 25°C, and humidity: 70%RH.



VOLTAGE CONVERSION CHART ▶▶ P.25

SANPLATEC® Dry-Keeper Series

Auto type adopts a high performance dehumidification unit ED-1 which maintains the inside humidity at 30% to 40%RH.(With silica gel regeneration function. Troublesome replacement is unnecessary.)

Non-auto type has a pan for silica gel and is convenient. Also use in applications other than dehumidification.

* Since there may be cases when the error produced by sudden humidity changes and shock becomes large, use the hygrometer supplied with the auto type only as a guide.

* The inside humidity is slightly different depending on the set room temperature and usage conditions.

B : Frame black, body clear transparent
W : Frame white, body clear transparent
BS : Frame black, body smokey transparent

DRY-KEEPER AUTO C-type

PVC ABS

Code No.	Model	Accessory
0001	Auto C-3B	Latch door type Shelf plate 3 plates
0002	Auto C-3W	Latch door type Shelf plate 3 plates
0003	Auto C-3BS	Latch door type Shelf plate 3 plates
0004	Spare shelf with vent holes (for C-3)	

DRY-KEEPER C-type(Non-auto type)

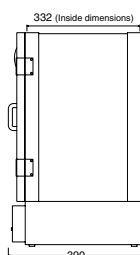
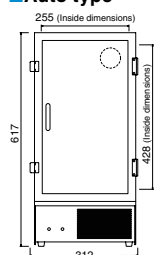
PVC ABS

Code No.	Model	Accessory
0030	C-3B	Latch door type Shelf plate 3 plates
0031	C-3W	Latch door type Shelf plate 3 plates
0032	C-3BS	Latch door type Shelf plate 3 plates
0004	Spare shelf with vent holes (for C-3)	

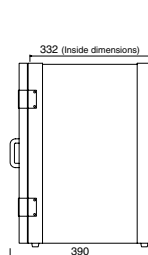
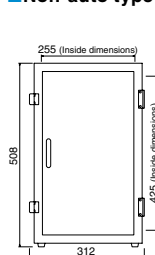
Features

- Functions and strength are improved markedly by combining molded parts.
- Shelf plates can be adjusted in 15 steps at 28mm intervals to match the size of the stored items.
- Two frame colors of white and black. In addition, a transparent type body cabinet and a smoke type (black frame only) body cabinet which prevents deterioration and discoloring of the stored items are offered.
- Slim vertical type design does not take up space.

Auto type



Non-auto type



Note

- We only have 100V specification.
- It requires additional transformer in order to use it in other countries.

VOLTAGE CONVERSION CHART P.25

DRY-KEEPER AUTO A-type

PVC ABS

Code No.	Model	Accessory
0010	Auto A-3B	Latch door type Shelf plate 2 plates
0011	Auto A-3W	Latch door type Shelf plate 2 plates
0012	Spare shelf with vent holes (for A-3)	

DRY-KEEPER A-type(Non-auto type)

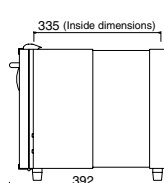
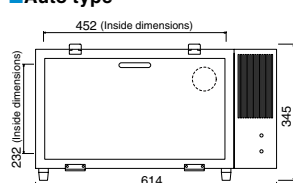
PVC ABS

Code No.	Model	Accessory
0040	A-3B	Latch door type Shelf plate 2 plates
0041	A-3W	Latch door type Shelf plate 2 plates
0012	Spare shelf with vent holes (for A-3)	

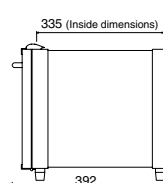
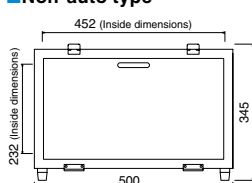
Features

- Functions and strength are improved markedly by combining molded parts.
- Shelf plates can be adjusted in 8 steps at 28mm intervals to match the size of the stored items.
- Two frame colors of white and black.
- Horizontal type design with a sense of stability.

Auto type



Non-auto type



Note

- We only have 100V specification.
- It requires additional transformer in order to use it in other countries.

VOLTAGE CONVERSION CHART P.25

Available 5 colors. Sabplatec products color coordinate your Laboratory.

i-BOX

► High performance

Highly functional dehumidification unit DU-2 mounted (auto-desiccator only)



Inside humidity is maintained at 30% to 40%RH.

The DU-2 is equipped with a function which periodically regenerates the desiccant, and the dehumidification effect is continued semi-permanently.

► Good design

Stacking OK!



Since the body ceiling was made completely flat, use by stacking two is also possible. Since there are no protrusions other than the body handle section, use it without wasting limited space.

► Low price

Simple opening and closing by one touch door.



Push-lock system handle is easy to use and easy to open and close with one hand.



Moon



Snow



Ocean



Forest



Tropical

i-BOX (Auto-type Desiccator)



Code No.	Model	Accessory
0151	Forest	Shelf plate 2 plates Hygrometer
0152	Tropical	Shelf plate 2 plates Hygrometer
0153	Ocean	Shelf plate 2 plates Hygrometer
0154	Snow	Shelf plate 2 plates Hygrometer
0155	Moon	Shelf plate 2 plates Hygrometer
0021	Spare shelf with vent holes	

* All specifications are the same as "D-BOX" Auto-Desiccator.

●Features

- Full auto unit mounted (DU-2)
- Inside humidity is maintained at 30% to 40%RH.
- Stacking OK. Very convenient.

●Note

- We only have 100V specification.
- It requires additional transformer in order to use it in other countries.
- Select your favorite color from 5 colors and specify the code number and color so that there are no mistakes.

i-BOX (Non Auto-type Desiccator)



Code No.	Model	Accessory
0316	Forest	Shelf plate 2 plates Hygrometer Silica-gel
0317	Tropical	Shelf plate 2 plates Hygrometer Silica-gel
0318	Ocean	Shelf plate 2 plates Hygrometer Silica-gel
0319	Snow	Shelf plate 2 plates Hygrometer Silica-gel
0320	Moon	Shelf plate 2 plates Hygrometer Silica-gel
0021	Spare shelf with vent holes	

* All specifications are the same as "E-BOX" Silica-gel Desiccator.

●Features

- Non-auto economy type desiccator with silica-gel.
- Use even as a storage BOX.
- Select your favorite color from 5 colors.

●Note

- Select your favorite color from 5 colors and specify the code number and color so that there are no mistakes.

VOLTAGE CONVERSION CHART

Main Region List for Each Voltage

220V-240V Region

Europe	Asia	Oceania
England Italy Switzerland Netherlands Spain Russia Germany France etc.	India Indonesia Thailand Singapore Korea China HongKong Philippines Mongolia etc.	Australia New Zealand New Caledonia etc.

110V-130V Region

North, South America	Asia	Oceania
USA Canada Mexico Brazil etc.	Taiwan Vietnam etc.	Guam etc.

Plug Type List

A Type	B Type	B3 Type	BF Type
C Type	O Type	O2 Type	SE Type

* This data may change depends on your area. Please make sure to check your correct voltage before purchasing.

⚠ The plug type of SANPLATEC products is "A" type. Please make sure to check correct plug type.



D-BOX (Auto-type Desiccator)

ABS AS

Code No.	Model	Accessory
0150	ver.1	Shelf plate 2 plates Hygrometer
0021	Spare shelf with vent holes	

* It can equipped maximum three shelf boards.

Features

- High functional dehydrator: new concept of dehydrator makes better dehumidify rate.
- Compact size : compact body save space in laboratories.
- One-touch door : open and close a door with one hand.
Put products in and out smoothly.
- Stackable : it is stackable, and use space effectively.
- Automatic : no need to change silica gel.
- Low price : Cost down by assembling product at once.

Specifications

	Body	Dehydrator Unit
Material	ABS	ABS-POM
Outer size	310mmW x360mmD x430mmH	230mmW x140mmD x60mmH
Inner size	253mmW x313mmD x358mmH	
Weight	about 4.0kg (include dehydrator unit 900g, shelf board is not included.)	
Supply Voltage		AC100V
Consumptive Electricity		average 15W
Dry Cycle		2 hour(60Hz) 2.4 hour(50Hz)

- **Note** - We only have 100V desiccators.
- It requires additional transformer in order to use it in other countries.

VOLTAGE CONVERSION CHART

P.25

MINI DESICCATOR CABINET

PS AS

Code No.	Model	Specifications	Outside Dimentions
0050	MD-1	1 Level	225 x 208 x 170H
0051	MD-1H	1 Level ; With handle	225 x 208 x 190H

- * Effective inner dimentions : 190W x 175D x 110H mm
* Body : Polystyrene; Door : Acrylonitrile-styrene
* Handle type has a handle on top.

Features

- Perfect for storing cameras or precision instrument components in a laboratory or testing room.Fits in lockers or on shelves; wide variety of uses as work bench or testing bench.
- Silica gel is on each type of Sanplatec Mini Desiccator Cabinet.
- Compact and lightweight, very useful for carrying box for semiconductor and electronic components and in-house transporting.



MINI DESICCATOR CABINET Smoke-transparent type

PS AS

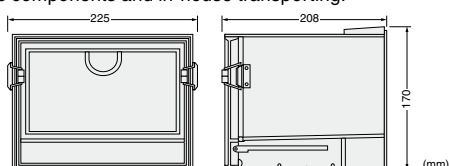
Code No.	Model	Specifications	Outside Dimentions
0056	MD-1S	1 Level	225 x 208 x 170H
0057	MD-1SH	1 Level ; With handle	225 x 208 x 190H

- * Effective inner dimentions : 190W x175D x110H mm
* Handle type has a handle on top.

Features

- Perfect for storing cameras or precision instrument components in a laboratory or testing room.Fits in lockers or on shelves; wide variety of uses as work bench or testing bench.
- Silica gel is on each type of Sanplatec Mini Desiccator Cabinet.
- Compact and lightweight, very useful for carrying box for semiconductor and electronic components and in-house transporting.

MD-1S



SUKIMA STOCKER



Code No.	Model	Accessory
26891	MLBS	Silicagel Tray 1 pc

● Features

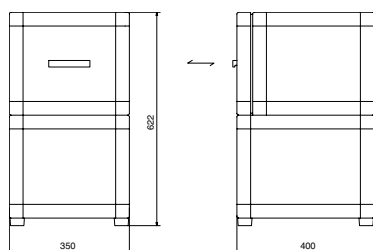
- Upper side is drawer type desiccator, bottom side is a stocker.
- It is able to put under table. You can use your limited space more efficiently.

■ Specifications

Outer size (mm) : 350×412×622

Upper Side Drawer Available Inner Size (mm) : 228×325×145 (Loading Weight 2kg)

Bottom Side Available Inner Size (mm) : 270×320×220 (Loading Weight 4kg)



It equips silica-gel tray



Good storage capacity

MOBILE DESICCATOR



Code No.	Model	Specifications
26265	MBD-1	Without A Cushion
26266	MBD-2	With A Cushion

● Features

- Body is made of composite plate which has good strength and opacity.
- Port (Rc1/4) for attaching spigot was set in two spot of both type of desiccator.
- MBD-2 equips urethane cushion inside. It protects storage from shock damage.

■ Specifications

Body Outer size (mm) : 250W×230D×289H

Body Inner size (mm) : 190W×170D×230H

Both types have common and similar size.

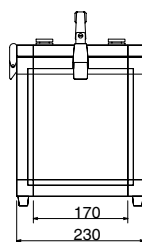
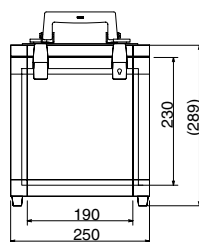
Weight : MBD-1 About 2.4kg

Weight : MBD-2 About 2.6kg

Loading Weight : 1kg (For both types)



It is easy to carry even long hours with hand carry handle.



MBD-1 Without a cushion



MBD-2 With a cushion



You can also add compartments inside to hold storages.



Also, it is possible to connect with valves for gas replacement. Protecting inside materials.

IN - OUT VALVE



Code No.	Model	Available Tube External Diameter (mm)
5073	BVLC20-0602	6
19597	BVLC20-0802	8
19598	BVLC60-1002	10
19599	BVLC60-1202	12

* Screw size is all R1/4.

● Features

- It is easy to install with one-touch connection to nylon and urethane tubes.

■ Specifications

Available Fluid : Air, water (water should be, 0 - 60°C, 0 - 0.3MPa, and no impact flow)

Available Pressure Range : 0 - 0.9MPa

Available temperature Range : 0 - 60°C

Apply Tube Material : polyurethane, Nylon



One Unit has Two Functions

FORMATION HOOD

It has function as a desk top hood or desk top clean bench.

Formation Hood

- A new hood which pursue more convenience for users.
 - The top part is replaceable by simply change the unit.
 - It can change to both desk top draft or desk top clean bench.
- It is very convenient.



Easy installation.
You can install it by simple fix all screws.



FORMATION HOOD BODY

Code No.	Model	Outer Size (mm)
26942	F-500H	500x500x750
26943	F-700	700x500x500
26944	F-1000	1000x500x500
26945	F-1000H	1000x500x750

Features

It becomes a desk top hood if you attach fan unit, it becomes desk top clean bench if you attach clean unit.

■ Frame : Aluminum

■ Door, Side, Top, Rear : Transparent vinyl chloride plate

■ Bottom : White vinyl chloride plate

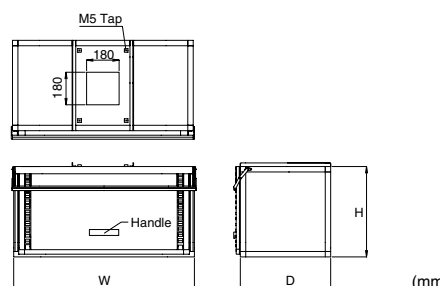
Note

The duct hose doesn't come with this item

Body Size

	W	D	H	Weight
F-500H	500	500	750	Approx. 12.5kg
F-700	700	500	500	Approx. 12 kg
F-1000	1000	500	500	Approx. 15 kg
F-1000H	1000	500	750	Approx. 18.5kg

(mm)



(mm)

FAN UNIT

Code No.	Model	適用本体
26947	1 type	F-500H · F-700
26948	2 type	F-1000 · F-1000H

Features

Only put it on formation hood and tighten all screws for installation.

Note

Fan and metal parts don't resist chemical with corrosive chemical.

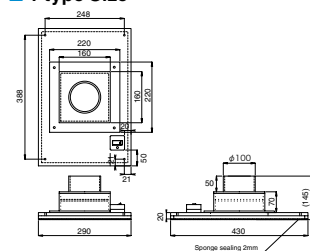
Specification

1 type - AC Fan : 2.8m/min

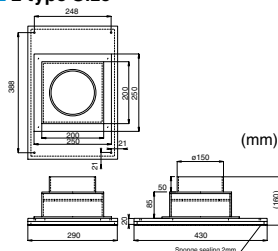
2 type - AC Fan : Wind Power is Adjustable (Shift Gears Type)

Maximum Wind Power : 6.2m/min

1 type Size



2 type Size



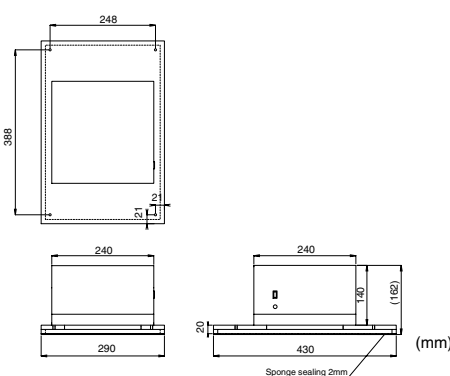
CLEAN UNIT

Code No.	Model	適用本体
26953	1 type	F-500H · F-700 · F-1000 · F-1000H

Features

Only put it on formation hood and tighten all screws to make clean environment inside.

1 type Size



We only have 100V specification. It requires additional transformer in order to use it in other countries.

VOLTAGE CONVERSION CHART

P.25

SANIPLATEC® PFA Series



PFA Bottles

Wide Mouth : 10ml – 1L
Narrow Mouth : 100ml – 1L

▶ P.38



PFA Bottles with Clean Pack

Wide Mouth : 20ml – 1L
Narrow Mouth : 100ml – 1L

▶ P.39



PFA Wash Bottles

Wide Mouth : 10ml – 1L
Narrow Mouth : 100ml – 1L

▶ P.40



PFA Bottles with Acid Pack

Wide Mouth : 20ml, 100ml, 250ml
Narrow Mouth : 100ml, 250ml

▶ P.39



PFA Gas Wash Bottles

100ml – 1L

▶ P.40



PFA Big Size Bottles

3L, 5L, 10L

▶ P.40



PFA Beakers

With Handle : 100ml – 2L
Without Handle : 30ml – 1L

▶ P.41



PFA Graduated Frasks

25ml – 500ml

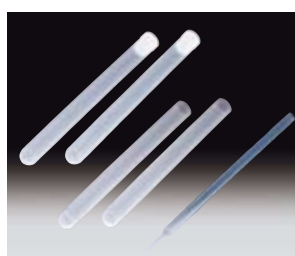
▶ P.41



PFA Graduated Cylinders

10ml – 2L

▶ P.41



PFA Testing Tubes

5ml – 60ml

▶ P.42

PFA Pipettes

2ml – 10ml

▶ P.42

SANIPLATEC® PTFE Series



PTFE Decomposition Vessel

5ml – 80ml

▶ P.43



PTFE Beakers

5ml – 2L

▶ P.44

It is very useful in semiconductor related, analysis organization, and chemical industry fields.
 Very precious metal free storage bottle even in our industry.
 We have both with middle cap and no middle cap variations.
 It has strong resistance against organic solvent, and heat resistance temperature is 200°C.
 This almighty bottle also has good anti-adhesiveness.



Leak-proof construction is realized With cap with push-in seal or Without push-in seal. Unsurpassed sealing properties.



Since the push-in seal is made of PFA, there is no fear of metal elution. Easy-to-use compact design. A tab is provided at the push-in seal so removal is easy.



Easy-to-use compact design. A tab is provided at the push-in seal so removal is easy.

Thorough quality control implemented

Leak (decompression) and appearance tests are conducted. All products are subjected to an appearance test. Product lot control system is also perfect. Products are packaged individually.



Leak (decompression) test



Appearance test



Individual package

United States Pharmacopoeia (USP) Class 6 certified

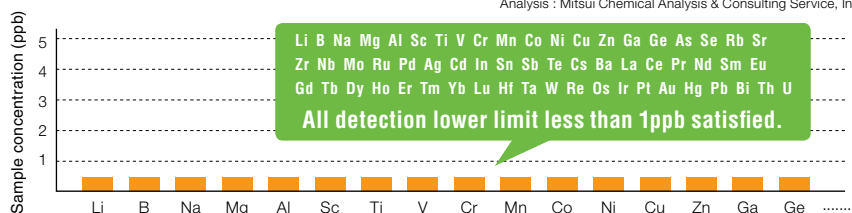
Sanplatec PFA bottles have received USP Class 6 certification. USP Class 6 is a rating given to products which have passed various animal physiological and cytological test items.

Excellent performance and construction

The biggest feature of PFA is that it is metal free. With Sanplatec PFA products, metal elution is STOPPED!!

Results of metal elution test of Sanplatec original PFA bottle

Analysis : Mitsui Chemical Analysis & Consulting Service, Inc.



PFA WIDE MOUTH BOTTLE



without inner seal	with inner seal	Model	Cap Outside Dia x Mouth Inside Dia x Barrel Dia x Total height (mm)
Code	Code		
25430	—	10ml	27ø x 16ø x 27.5ø x 41.3
13905	—	20ml	27ø x 16ø x 27.5ø x 60
18108	18112	100ml	46ø x 33ø x 48 ø x 93 (95)
18109	18113	250ml	46ø x 33ø x 61 ø x 125 (127)
18110	18114	500ml	63ø x 50ø x 77 ø x 153 (155)
18111	18115	1000ml	63ø x 50ø x 96 ø x 193 (195)

* () : with inner seal



PFA NARROW MOUTH BOTTLE



without inner seal	with inner seal	Model	Cap Outside Dia x Mouth Inside Dia x Barrel Dia x Total height (mm)
Code	Code		
18100	18104	100ml	36ø x 23ø x 48.2ø x 93 (95)
18101	18105	250ml	36ø x 23ø x 62.6ø x 125 (127)
18102	18106	500ml	46ø x 33ø x 77.6ø x 153 (155)
18103	18107	1000ml	46ø x 33ø x 98 ø x 193 (195)

* () : with inner seal



Clean Pack PFA NARROW MOUTH BOTTLES (without Inner Seal) Class 100 PFA

Code No.	Model	Set (pc)
18116	100ml	5
18117	250ml	5
18118	500ml	2
18119	1L	1

* Double packed for each set.



Clean Pack PFA WIDE MOUTH BOTTLES (without Inner Seal) Class 100 PFA

Code No.	Model	Set (pc)
18124	20ml	10
18125	100ml	5
18126	250ml	5
18127	500ml	2
18128	1L	1

* Double packed for each set.

HYDROCHLORIC ACID WASH PFA BOTTLES NEW Class 100 PFA

Code No.	Model	Set (pc)
23795	Narrow Mouth 100ml (without Inner Seal)	5
23796	Narrow Mouth 250ml (without Inner Seal)	5
23797	Wide Mouth 20ml (without Inner Seal)	10
23798	Wide Mouth 100ml (without Inner Seal)	5
23799	Wide Mouth 250ml (without Inner Seal)	5

* Double packed for each set.

● Features

- After chemical wash and pure water wash treatment, it is packed in class 100 clean room.
- It has maximum cleanliness by removing most of the particles and metal ion.
- Please contact us for large amount order.

HYDROFLUORIC ACID WASH PFA BOTTLES NEW Class 100 PFA

Code No.	Model	Set (pc)
23790	Narrow Mouth 100ml (without Inner Seal)	5
23791	Narrow Mouth 250ml (without Inner Seal)	5
23792	Wide Mouth 20 (without Inner Seal)	10
23793	Wide Mouth 100 (without Inner Seal)	5
23794	Wide Mouth 250 (without Inner Seal)	5

* Double packed for each set.

● Features

- After chemical wash and pure water wash treatment, it is packed in class 100 clean room.
- It has maximum cleanliness by removing most of the particles and metal ion.
- Please contact us for large amount order.

Advantages of acid Wash PFA Bottles

- 1 To shorten the working time in order to cut the step of acid wash before using PFA bottles.
- 2 It is possible to reduce amount of waste fluid because no necessary prepare chemical for washing.
- 3 To reduce cost of washing chemical.

Basic Steps for Acid Wash



PFA NARROW MOUTH WASH BOTTLE



Code No.	Model
18133	100ml
18134	250ml
18135	500ml
18136	1L

Features

- Use with any chemical from acetone and other organic solvents, ethanol and other alcohols, and strong acids to strong alkalis and pure water.
- Since the body, cap, nozzle are all PFA, use with auto claves is, of course, also possible.



PFA WIDE MOUTH WASH BOTTLE



Code No.	Model
18141	100ml
18142	250ml
18143	500ml
18144	1L

Features

- Use with any chemical from acetone and other organic solvents, ethanol and other alcohols, and strong acids to strong alkalis and pure water.
- Since the body, cap, nozzle are all PFA, use with auto claves is, of course, also possible.



PFA GAS WASH BOTTLE



Code No.	Model	Tube Outside Diameter (ømm)
18149	100ml	8
18150	250ml	8
18151	500ml	8
18152	1L	8

Features

- A gas wash bottle made of all fluoric resin.
- It has excellent heat and chemical resistance.

Specification

Hole Diameter of Filter Ball 10μm
Diameter of Filter Ball ø25mm
Material of Filter Ball : PTFE



PFA NARROW MOUTH BOTTLE (with Spigot)



Code No.	Model
14125	3L
14126	5L
14127	10L

* With Inner Seal
* Inner Seal : PTFE

Features

- A PFA narrow mouth bottle with PFA spigot.





One piece molding

High chemical and heat resistance

The biggest features of PFA is that it is metal free.

Metal elusion is stopped.

One piece molding

Handle is not welded, won't take apart.

Handle is designed to fit your hand. Enable to hold snugly when full of liquid.

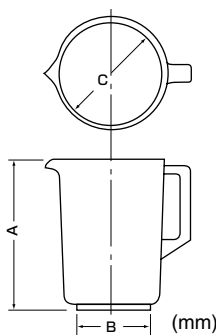
Graduations are clear and accurate.

Projected molded graduation provides safety handling even with wet hands.

Graduations are clear and accurate (within $\pm 2\%$).

GRAND PFA BEAKER (with Handle/without Handle) PFA

With handle	Without handle	Model	Scale (ml)
Code	Code		
—	11115	30ml	5
—	11116	50ml	10
11110	11117	100ml	20
11111	11118	200ml	50
—	11119	300ml	50
11112	11120	500ml	50
11113	11121	1L	100
11114	—	2L	100



handle	Model	A	B	C
with handle	100ml	71	44	56.8
	200ml	92.8	54	69
	500ml	121	72	90
	1L	152	90	110
without handle	30ml	51	34	37
	50ml	61	34	44.4
	100ml	71	44	56.8
	200ml	92.8	54	69
	300ml	109	61	78
	500ml	121	72	90
	1L	152	90	110

PFA VOLUMETRIC FLASK

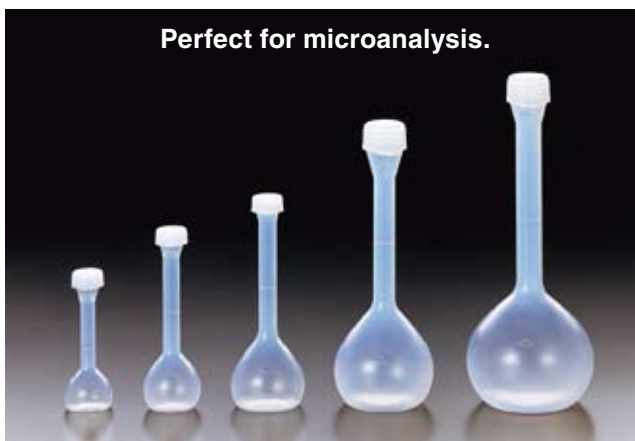
Code	Model	Total height (mm)
18153	25ml	112
18154	50ml	147
18155	100ml	177
18156	250ml	232
18157	500ml	272

Features

Stamping of graduation on each flask is based on precision weight measurement by electronic scale.



Perfect for microanalysis.



Since volumetric flasks are experiment equipment which demand precision, stamping of graduations onto each flask is based on precision weight measurement by electronic scale.

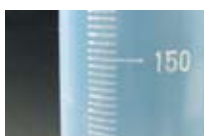
PFA GRADUATED CYLINDERS

Code No.	Model	Scale (ml)	Total height (mm)
6766	10ml	0.2	108
6767	30ml	0.5	154
6768	50ml	1.0	199
6769	100ml	1.0	241
6770	200ml	2.0	263
6771	300ml	10.0	298
6772	500ml	10.0	340
6773	1L	10.0	423
6774	2L	20.0	523

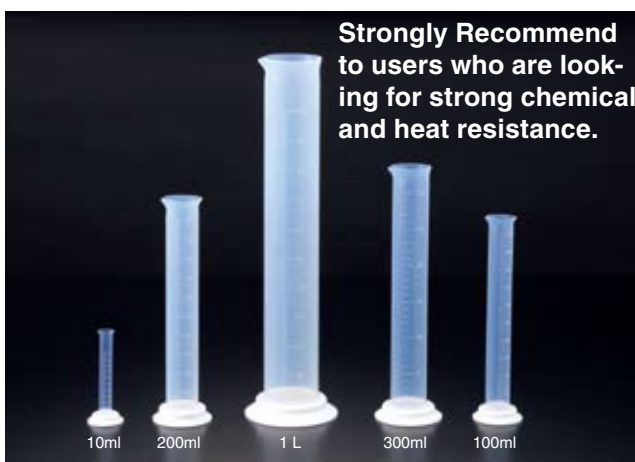
* Cylinder Part : PFA
Pedestal : PTFE

Features

- A graduated cylinder with excellent chemical and heat resistance.
- A pedestal is made of PTFE, and it is stable.



Strongly Recommend to users who are looking for strong chemical and heat resistance.



PFA TEST TUBES



Code No.	Model	Inner Dia(mm)	Outside Dia(mm)	Total Height (mm)
8553	5ml	8 ø	10 ø	120
3498	10ml	10 ø	12 ø	140
3499	15ml	14 ø	16 ø	110
8556	20ml	14 ø	16 ø	160
8557	25ml	16 ø	19 ø	150
8558	50ml	20 ø	22 ø	220
8559	60ml	20 ø	22 ø	230

●Features

- A test tube made of PFA.
- It has excellent chemical resistance against most of chemical.
- It also has excellent heat and cold resistance to freeze or put it into oil bath.
- Moreover, it is non-adhesiveness, so no stick of testing material.



- It has wide range volume, from small 5ml to big 60ml.
- You can easily observe inside condition with semitransparent body.

PFA TEST TUBES with Scales and Caps



Code No.	Model	Scale	Body size (Inside Dia× Outside Dia×Height)(mm)
16254	20ml-C	20ml scale	20 ø×22 ø×110
16255	50ml-C	10 · 25 · 50ml scale	20 ø×22 ø×220

* It comes with exclusive use PTFE cap.

●Features

- 20ml and 50ml sizes are available.
- You can easily observe inside condition with semitransparent body.



PTFE CAPS for PFA TEST TUBES



Code No.	Model
16249	for 15ml · for 20ml
16251	for 25ml
16252	for 50ml · for 60ml

●Features

- A cap for Sanplatec PFA test tube.
- PTFE has excellent chemical resistance.



PFA PIPETTE



Code No.	Model (mm)	Specification	Amount (pc)
21240	ø10×210		1
6946		Pipette, made of Silicon	5

* You need extra rubber syringe to use. Please contact us.

●Features

- A metal free pipette made of all PFA.
- Please use it for chemical transfer between container to container, or diluting in graduated flasks.

■Specification

ø10mm×210mm



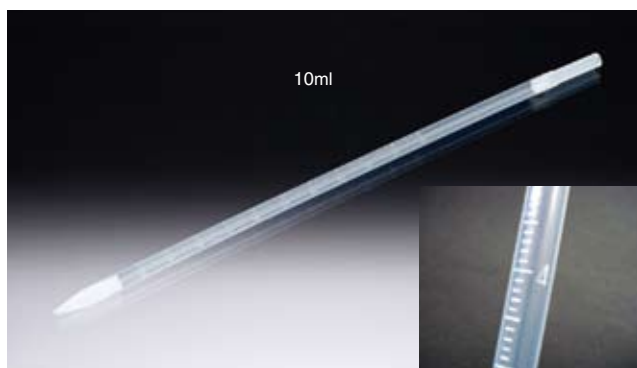
Metal Free Pipette is Here

PFA GRAD



Code No.	Model	Scale (ml)	Total Height (mm)
16156	2ml	0.02	360
16157	5ml	0.1	370
16158	10ml	0.1	380

* The head part is also made of PFA.





PTFE WIDE MOUTH BOTTLES



Code No.	Model	External diameter x Overall height (mm)	Mouth Diameter (mm)
9273	1ml	18 ø x 20H	9 ø
9274	3ml	20 ø x 27H	13 ø
9275	5ml	24 ø x 31H	16 ø
9276	10ml	30 ø x 40H	18 ø
9277	25ml	35 ø x 50H	24 ø
9278	50ml	45 ø x 67H	34 ø
9279	100ml	50 ø x 82H	34 ø

Features

- A bottle made of PTFE.
- It has excellent heat and chemical resistance.
- Inner bottom is flat.



PTFE SQUARE BOTTLES



Code No.	Model	Mouth Diameter (mm)	External diameter x Overall height (mm)
6577	100ml	39 ø	60 ø x 100H
6578	250ml	50 ø	70 ø x 113H
6579	500ml	68 ø	90 ø x 128H
6580	1L	88 ø	110 ø x 137H

Features

- Inner shape is square with round edge, and inner bottom is flat.

PTFE DECOMPOSITION VESSELS



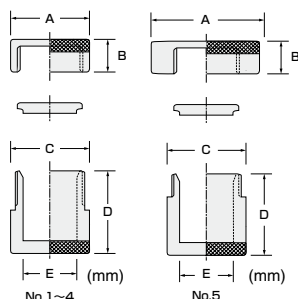
Code No.	Model	Volume (ml)	External diameter x Overall height (mm)	Internal diameter x Overall height (mm)
9262	No.1	8	40 ø x 56	20 ø x 25
9263	No.2	15	45 ø x 60	25 ø x 30
9264	No.3	25	50 ø x 65	30 ø x 35
9265	No.4	50	60 ø x 75	38 ø x 45
9266	No.5	100	70 ø x 90	50 ø x 60

Features

- A decomposition vessel made of PTFE.
- No.1 – No.3 for acid decomposition under normal temperature.
- No.4, No.5 for humidification decomposition formula with nitric acid.

Note

- It is able to heat nitric acid until its boiling point of 121°C by humidification decomposition formula.
- Steam pressure may cause transformation, leak, or burst if inside temperature is over the specify temperature.
- Put acid and testing material inside, then heat No.4 and No.5 by incubator.
- Do not use a microwave to heat these vessels because it cannot control inside temperature.
- It is made of all PTFE and has few ion elution.



Specification

Model	A	B	C	D	E
No.1	40	25	40	45	20
No.2	45	25	45	50	25
No.3	50	25	50	55	30
No.4	60	25	60	65	40
No.5	90	35	70	75	50

(mm)

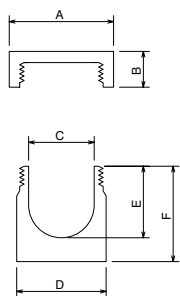
PTFE ROUND BOTTOM DECOMPOSITION VESSEL



Code No.	Model	Volume
20910	S	5ml
20911	M	15ml
20912	L	80ml

Features

- A round bottom bottle made of PTFE. It is suitable for adhesive liquid because of the round bottom.



type	A	B	C	D	E	F
S	ø 35	12	ø 22	ø 30	24	32
M	ø 45	12	ø 32	ø 40	29	37
L	ø 55	12	ø 42	ø 50	74	82

(mm)

A New Round Bottom Bottle !!



PTFE BEAKERS



Code No.	Model	Bottom External diameter x Overall height (mm)
19027	50ml	44 ø x 54
19028	100ml	54 ø x 63
19029	200ml	69 ø x 84
19030	300ml	72 ø x 101
19031	500ml	83 ø x 128
19032	1L	108 ø x 148
19033	2L	138 ø x 198

● Features

- All amount inspection for quality control.
- Suitable for severe testing such as a reaction container ! A high quality beaker with excellent heat and chemical resistance.
- Very solid with high thickness.
- It is suitable to handle adhesive testing material.

Sanplatec Original PTFE Beakers



PTFE THICK BEAKERS



Code No.	Model	External diameter x Overall height (mm)	Code No. for Cap
9286	3ml	18 ø x 22H	—
9287	5ml	20 ø x 32H	5502
9288	10ml	26 ø x 38H	5503
9289	25ml	37 ø x 44H	5504
9290	50ml	39 ø x 58H	5505
9291	100ml	48 ø x 72H	5506
9292	150ml	55 ø x 81H	5507
9293	250ml	66 ø x 98H	5508
9294	500ml	81 ø x 118H	5509
9296	1L	103 ø x 152H	5510
9297	2L	140 ø x 188H	5511

● Features

- Its upper side with thick ring for support and stopper.
- Thickness supports stable chemical storage and stirring.



PTFE HEATABLE BEAKERS



Code No.	Model	External diameter x Overall height (mm)
18356	100ml	56 ø x 74H
18357	250ml	75 ø x 94H
18358	400ml	85 ø x 112H

● Features

- A heatable beaker made of PTFE. You are able to heat it by put it directly on hot plate.
- Attaching PTFE which contains carbon at surface in order to increase thermal conductivity.

● Note

Please use it under 250°C of PTFE maximum heat.



It Can be Put Directly on Hot Plate



PTFE PETRI DISH



Code No.	External diameter x Internal diameter x Overall height (mm)	Depth (mm)
21221	60 ø x 50 ø x 15H	10H
21222	90 ø x 80 ø x 15H	10H
21223	100 ø x 90 ø x 20H	15H
21224	120 ø x 110 ø x 20H	15H
21225	150 ø x 140 ø x 20H	15H

● Features

- It has excellent heat and chemical resistance because it is made of PTFE.
- It is autoclavable for repeat use.
- Good non-adhesiveness, no testing material will be left.

Good Non-Adhesiveness



FLUORIC RESIN FILTER HOLDER



NEW

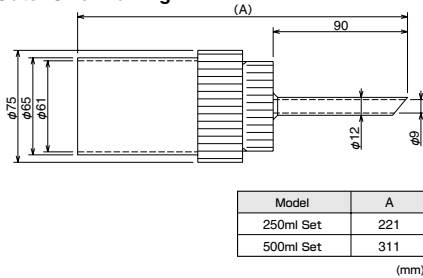
Code No.	Model
20158	250ml Set
20159	500ml Set
20160	Funnel Pipe for 250ml
20161	Funnel Pipe for 500ml
20162	Upper Funnel Holder
20163	Bottom Filter Base
23556	Mesh Dish

* Please use $\phi 47\text{mm}$ filter. (Filter is not included with this product.)
 * Each hole diameter of mesh dish is $\phi 1\text{mm}$.

Features

- Most suitable for decompression filtration.
- It has excellent chemical resistance because it is made of fluoric resin.
- Setting is easy with screw type.
- It can change volume by only exchange funnel pipe.
- Easy to clean up after take it a part.

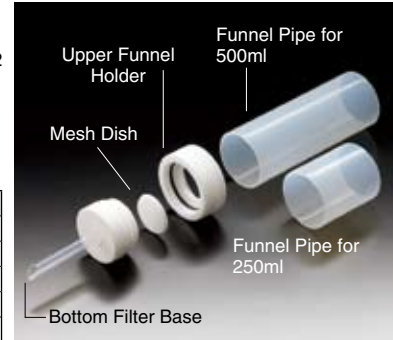
Outer Size Drawing



Component parts	Material
Funnel Pipe	PFA
Upper Funnel Holder	PTFE
Bottom Filter Base	PTFE, PFA
Mesh Dish	PTFE
O Ring	Fluorine-contained Rubber

Set Detail

Funnel Pipe 1pc
 Upper Funnel Holder (with 2 O rings) 1pc
 Bottom Filter Base 1pc
 Mesh Dish 1pc



PTFE SPATULA Trapezoid Type



Code No.	Model	Height of Spatula (mm)	Total Height (mm)
6723	50mm	40	160
6724	70mm	50	180
6725	90mm	60	200
6726	120mm	85	200

* Size indicates width of spatula.



PTFE SPATULA Half Moon Type



Code No.	Model	Height of Spatula (mm)	Total Height (mm)
6727	75mm	45	160
6728	100mm	55	180
6729	125mm	75	200
6730	150mm	85	200

* Size indicates width of spatula.



PTFE TAPERED TWEEZER with Guide



Code No.	Model	Head shape	Width×Grip width×Total height (mm)
4957	No.1	Sharp Head	1.0× 8×100
4958	No.2	Sharp Head	1.5×10×150
4959	No.3	Sharp Head	2.0×12×200

Features

A guide stick to balance its head when pick up items.



PTFE FLAT SHAPE TWEEZER with Guide



Code No.	Model	Head shape	Width×Grip width×Total height (mm)
4960	No.1	Flat Head	3.5× 8×100
4961	No.2	Flat Head	4.5×10×150
4962	No.3	Flat Head	5.0×12×200

Features

A guide stick to balance its head when pick up items.

PFA TUBE



1m	10m	External diameter × Internal diameter × thickness (mm)
Code No.	Code No.	
5657	5679	3ø × 2ø × 0.5
5658	5680	4ø × 2ø × 1.0
5659	5681	4ø × 3ø × 0.5
5660	5682	6ø × 4ø × 1.0
5661	5683	6ø × 5ø × 0.5
5662	5684	8ø × 6ø × 1.0
5663	5685	8ø × 7ø × 0.5
5664	5686	10ø × 8ø × 1.0
5666	5688	12ø × 10ø × 1.0
5668	5690	14ø × 12ø × 1.0
5669	18470	15ø × 13ø × 1.0
5670	18471	16ø × 13ø × 1.5
5671	18472	16ø × 14ø × 1.0
5672	18473	18ø × 15ø × 1.5
5673	18474	18ø × 16ø × 1.0
5674	18475	19ø × 16ø × 1.5
5675	18476	22ø × 19ø × 1.5
5677	18477	25ø × 22ø × 1.5

PFA TUBE (Inch Size)



Code No.	External diameter × Internal diameter × thickness (mm)
18490	1.59ø × 3.17(1/8")ø × 0.79
18491	3.17ø × 6.35(1/4")ø × 1.59
18492	4.35ø × 6.35(1/4")ø × 1
18493	6.35ø × 9.53(3/8")ø × 1.59
18494	7.53ø × 9.53(3/8")ø × 1
18495	9.53ø × 12.70(1/2")ø × 1.59
18496	10.70ø × 12.70(1/2")ø × 1
18497	15.87ø × 19.05(3/4")ø × 1.59



●Features

- It has excellent non-adhesiveness, prevent dirty or dust to attach it.
- It is suitable to cut electricity because it has tiny electrical loss under condition of high temperature, high humidity, or high frequency.
- It has excellent non-adhesiveness, prevent dirty or dust to attach it.
- It has excellent weather resistance.
- It is safe to continuously use it under 200°C eventhough its maximum temperature is 260°C.
- PFA tube is clearer compare to PTFE tube.

PTFE TUBE



1m	10m	External diameter × Internal diameter (mm)	Thickness (mm)
Code No.	Code No.		
5410	5450	2ø × 1ø	0.5
5411	5451	3ø × 2ø	0.5
5412	5452	4ø × 3ø	0.5
5413	5453	5ø × 4ø	0.5
5414	5454	6ø × 5ø	0.5
5415	5455	7ø × 6ø	0.5
5416	5456	8ø × 7ø	0.5
5417	5457	9ø × 8ø	0.5
5418	5458	10ø × 9ø	0.5
5419	5459	11ø × 10ø	0.5
5420	5460	12ø × 11ø	0.5
5421	5461	13ø × 12ø	0.5
5422	5462	3ø × 1ø	1.0
5423	5463	4ø × 2ø	1.0
5424	5464	5ø × 3ø	1.0
5425	5465	6ø × 4ø	1.0
5426	5466	7ø × 5ø	1.0
5427	5467	8ø × 6ø	1.0
5428	5468	9ø × 7ø	1.0
5429	5469	10ø × 8ø	1.0
5430	5470	11ø × 9ø	1.0
5431	5471	12ø × 10ø	1.0
5432	5472	13ø × 11ø	1.0
5433	5473	14ø × 12ø	1.0
5434	5474	15ø × 13ø	1.0
5435	5475	16ø × 14ø	1.0
5436	5478	18ø × 16ø	1.0



1m	10m	External diameter × Internal diameter (mm)	Thickness (mm)
Code No.	Code No.		
5437	5479	21ø × 19ø	1.0
5444	—	42ø × 39ø	1.5

* Size 42ø×39ø is straight tube.

●Features

- It has excellent non-adhesiveness, prevent dirty or dust to attach it.
- It is suitable to cut electricity because it has tiny electrical loss under condition of high temperature, high humidity, or high frequency.
- It has excellent non-adhesiveness, prevent dirty or dust to attach it.
- It has excellent weather resistance.
- It is safe to continuously use it under 200°C eventhough its maximum temperature is 260°C.
- PTFE tube has better cost performance compare to PFA tube.

SANPLATEC® TPX® Series



TPX® Beakers

code : 1041 – 1045
code : 1051 – 1058
code : 1061 – 1066

P.40



TPX® High Speed Funnels

code : 1091 – 1099

P.40



TPX® Graduate Cylinders

code : 1011 – 1019

TPX® Graduate Cylinders Plemium

code : 26961 – 26967

P.41



TPX® Connectors

Check Valves code : 9107 – 9109
I type code : 3541 – 3543
T type code : 3549 – 3551
Y type code : 3546 – 3548
Other type code : 3544 – 3545

P.42

SANPLATEC® Bottle Series

Wash Bottle



1 Multi Angle

code : 17000 – 17005
P.43



2 Soft

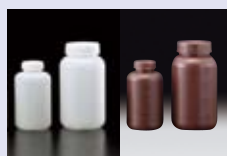
code : 25000
P.43



3 Gas

code : 25001 – 25003
P.43

Fluoric Treated Polyethylene Bottle



1 Bottles

code : 20415 - 20419
P.44



2 Amber Bottles

code : 26230 - 26232
P.44



3 Tanks

code : 25500 - 25501
P.44

4 Chemical Resist Wash Bottles

code : 26233
P.44



Book Bottles

with Spigot
code : 2120 – 2121, 2208, 2300, 2303
without Spigot
code : 2122 – 2123

P.45



PP Bottles

code : 2040 – 2047
code : 2030 – 2036

P.47



Quick Bottles

High Quality Sealing

code : 2080 – 2082, 2060 – 2061
code : 25010 – 25014
code : 25810 – 25813

P.47



Bigger Size Bottles

code : 2095 – 2097
2618, 2919
2626, 2927
6521 – 6522
2995 – 2997

P.46



Sealed Containers

code : 2150 – 2158
code : 2160 – 2161

P.48



PE Square Container Carboy Type

code : 2639, 91531

P.45

This plastic casting beaker, which has good heat resistance, chemical resistance, and transparency, has both better flow and usability.

TPX® BEAKERS

PMP

With handle Code No.	Without handle Code No.	Model	Scale (ml)
1051	1041	100ml	10
1052	1042	200ml	20
1053	1043	300ml	25
1054	1044	500ml	50
1055	1045	1L	50
1056	—	2L	100
1057	—	3L	200
1058	—	5L	200



LID for TPX® BEAKER

PP

Code No.	Model
1061	For 100ml
1062	For 200ml
1063	For 300ml
1064	For 500ml
1065	For 1L
1066	For 2L

* Material: PP

■ Dimensions Table

Volume	Mouth inner diameter (mm)	Total height (mm)
100ml	57	71
200ml	70	92
300ml	82	107
500ml	92	120
1L	116	152
1L (with handle)	116	152
2L (with handle)	137	200
3L (with handle)	160	225
5L (with handle)	185	270



Heat Resistance 170°C

Superior heat resistance means these can be used in microwave ovens, autoclaves and driers and the like.



Bottom Surface is Completely Flat

Perfect for stirring using a magnetic stirrer.



Easy-to-hold Grip

Large and easy-to-hold. The designs of the large sizes (3L and 5L) have been changed to be easier to hold even when full.



Superior Chemical Resistance

Can be used for anything other than strong acids or some organic pharmaceuticals.



METER GLASS (made of TPX®)

PMP

Code No.	Model	Stand diameter (mm)
6505	20ml	46ø
6506	100ml	58ø

* TPX® is registered trade mark of Mitsui Chemical Ltd.
Its official name is polymethylpentene (PMP).

● Features

Autoclavable



TPX® HIGH SPEED FUNNELS

PMP

Code No.	Model	Outer Radius above Foot (mm)	Outer Radius under Foot (mm)
1091	60mmø	10ø	8ø
1092	75mmø	10ø	8ø
1093	90mmø	13ø	10ø
1094	120mmø	14ø	12ø
1095	150mmø	15ø	13ø
1096	180mmø	19ø	15ø
1097	210mmø	24ø	22ø
1098	240mmø	26ø	25ø
1099	300mmø	32ø	30ø

● Features

- Autoclavable
- Spiral rib prevents stick of filter, so it is possible for much better working efficiency.
- 210, 240, and 300mmø have screw foot pipe.
- It is convenient for washing and storage.

SANPLATEC® TPX® Graduated Cylinders

Sanplatec®TPX® Graduated Cylinders have more than 30 years history and results. It has excellent qualities for wide field customers. (Laboratories, Pharmaceutical, Semiconductor, contractor)



Extremely superior resin that is chemical-resistant, heat-resistant, and transparent.

TPX® GRADUATED CYLINDER



Code No.	Model	Scale (ml)	Quantity (per case)
1011	10ml	0.1	200
1012	20ml	0.2	150
1013	50ml	1	100
1014	100ml	1	50
1015	200ml	2	40
1016	300ml	5	40
1017	500ml	5	20
1018	1L	10	16
1019	2L	20	9

●Features

- The 10ml and 20ml types have a funnel-shaped design at the top for easy use.
- Because the precision of the scale is important, these products have an extra device added to the injection molding, so they can be used with security.
- Also, the easy -to-see scale functions to prevent slipping, so these products can be safely handled even with wet hands.
- The base has nail holes convenient for drying and storage of the product.
- Weighted and stable design.

●Note

- We have specific data sheet for scale accuracy.
- Please contact us if you need more information.

TPX® GRADUATED CYLINDER PREMIUM

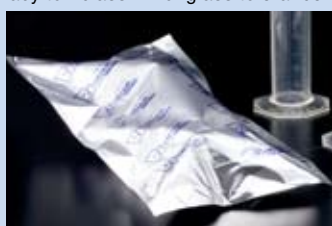


Code No.	Model	Scale (ml)	Quantity (per bag)
26961	50ml	1	5
26962	100ml	1	2
26963	200ml	2	2
26965	500ml	5	1
26966	1L	10	1
26967	2L	20	1

* A seal on the base indicates it has passed our quality examination.

●Features

- Sanplatec®TPX® Graduated Cylinder Premium is a high quality cylinder which has similar accuracy to "class A" of glass tolerance.
- We checked all amounts, and we only deliver a cylinder which has passed our internal examination.
- A cylinder with aluminum packaging in order to avoid any damage caused by UV ray.



■ Tolerance Range Based on Original Standard

Volume (ml)	50	100	200	500	1000	2000
Tolerance (ml)	± 0.5	± 0.5	± 1.0	± 2.5	± 5.0	± 10.0

TPX® CHECK VALVES



Code No.	Model	Application Tube Inner Diameter (mm)	Quantity(per case)
9107	S	3 - 6 ø	6
9108	M	6 - 9 ø	6
9109	L	9 - 12 ø	6

* Maximum Heat Resistance : 170°C
 * Maximum Available Pressure : 20psi (0.14MPa)
 * A sealing is made of silicon.

Features

- It prevents a countercurrent caused by the low pressure in pipe.
- Only flow one way. Also available for air line.

TPX® Check Valve Data Sheet

	9107	9108	9109
Total Length	60 mm	60 mm	76 mm
Length of pipes	19 mm	19 mm	25 mm
Pipe Top Size	3.1 mm	6.4 mm	9.5 mm
Pipe End Size	6.4 mm	9.5 mm	12.7 mm



TPX® TUBING CONNECTORS Taper-type I pattern



Code No.	Model	Application Tube Inner Diameter (mm)	Quantity(per case)
3541	Large	8 - 10 ø	10
3542	Middle	5 - 8 ø	10
3543	Small	3 - 5 ø	10

* Autoclavable



TPX® TUBING CONNECTORS Taper-type T pattern



Code No.	Model	Application Tube Inner Diameter (mm)	Quantity(per case)
3549	Large	8 - 10 ø	10
3550	Middle	5 - 8 ø	10
3551	Small	3 - 5 ø	10

* Autoclavable



TPX® TUBING CONNECTORS Taper-type Y pattern



Code No.	Model	Application Tube Inner Diameter (mm)	Quantity(per case)
3546	Large	8 - 10 ø	10
3547	Middle	5 - 8 ø	10
3548	Small	3 - 5 ø	10

* Autoclavable



TPX® TUBING CONNECTORS Taper-type Different diameter



Code No.	Model	Application Tube Inner Diameter (mm)	Quantity(per case)
3544	Large	5 - 8/8 - 13 ø	10
3545	Small	3 - 5/5 - 8 ø	10

* Autoclavable

Easy Search on The Website

You can check more details of all items listed on Sanplatec catalogue from our official website. Not only check products information, but also it contains multiple convenient tools, such as search engine for plastic chemical resistance and movies of products usage.

sanplatec.co.jp/en/index

Search



SANPLATEC CORP.

MULTI-WASH BOTTLES



Code No.	Model (ml)	Colors
17000	500	Blue
17001	500	Red
17002	1000	Blue
17003	1000	Red

* Bottle: LDPE; Cap, nozzle: HDPE; Tube connector: PP
Leading end of the nozzle: HDPE; Weight: Glass; Weight cover: PP
* Product is individually packaged.

No waste to the end. . .

The bellows bends under the weight of the glass ball to enable even the last drops of fluid to be completely squeezed out.



Can be used at any angle.

The glass ball follows the liquid no matter what angle the washing bottle is inclined. Can be used upside-down, so the conventionally hard-to-wash places are easy to reach now.



GAS REMOVABLE WASH BOTTLE



Code No.	Model (ml)
25001	250
25002	500
25003	1000

* Bottle, Cap: LDPE; nozzle, Leading end of the nozzle: HDPE

It prevent liquid dripping when you storage volatile chemicals.

Volatile chemical, such as ethanol and acetone, will cause liquid dripping when you storage it in bottle because high pressure inside of bottle. Our wash bottle can set free inside gas by loosen a plug on its cap.



It is possible to make chemical injection amount bigger by put off a point nozzle.

Point nozzle is removable, and you can keep it safely by put it into nozzle pocket which is attached side of bottle cap.



■ Specifications

We have three kind of sizes, 250ml, 500ml, and 1000ml.

● Note

Please tighten the equipped plug before using it.

SOFT WASH BOTTLE 'Softy'



Code No.	Model (ml)	Quantity (Bottles)
25000	500	5

* Bottle: LDPE; Cap, nozzle and Leading end of the nozzle : HDPE;
Tube connector: PP; Weight: Glass; Weight cover: PP

It requires less power compare to standard wash bottle.

We adopt soft material for its body, so it is more soft compare to other wash bottles when you touch it.

It is possible to inject liquid inside with small power, perfectly match for women. It also has restore power, so it will bounce back soon after injection.



It has same function from multi wash bottle, so it is free to use.

It is equipped with stretch nozzle and marble weight, so it is possible to inject liquid from any angle. Injection is possible from 360 angles. Also, it can inject any small amount, so it is the most economic wash bottle because you won't waste any single drop inside.



Washing Bottle for Women!



SANPLATEC® Fluoric Treated Polyethylene Bottle

- It has excellent gas barrier feature against organic solvent.
- It has excellent chemical resistance.



FLURO BARRIER PE BOTTLE (Fluoric Treated Polyethylene Bottle)

Code No.	Model	Mouth Inside Dia (mm)	External diameter x Overall height (mm)	Quantity (per case)
20415	100ml	ø31	ø 50x 93H	200
20416	250ml	ø31	ø 63x122H	100
20417	500ml	ø43	ø 78x152H	50
20418	1L	ø43	ø101x189H	50
20419	2L	ø75	ø127x234H	30

* Each has an inner seal.

● What is a fluoro barrier PE bottle?

It is a special treated PE bottle by fluoric chemical combination on surface.

● Feature

- The surface (fluoro barrier surface) where be close to chemical is fluoric treated, so it has excellent gas barrier feature (especially against organic solvent) and chemical resistance.
- Fluoric treated surface has permanent effect because we make it by fluoric chemical combination. (However, please use it with caution because the base material PE will appear if the surface was damaged, and it will lose its fluoric effect.)
- We can offer you a reasonable and light bottle because it basic material is PE.
- Production control by fluoric treated lot number marked on products.

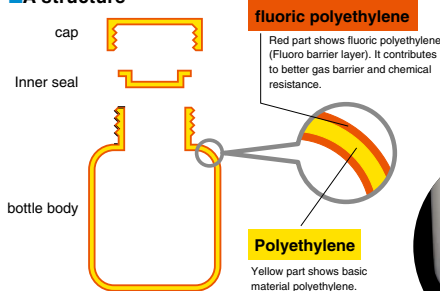
■ Specifications

Model	100ml	250ml	500ml	1L	2L
material	High density polyethylene (fluoric treated on surface)				
Inner seal	Low density polyethylene (fluoric treated on surface).				
Mouth Inside Dia (mm)	ø31		ø43		ø75
External diameter (mm)	ø50	ø63	ø78	ø101	ø127
Overall height (mm)	93	122	152	189	234
Heat Resistance Temperature	60°C				

■ About to use

- Please wash it before you use.
However, washing bottles with low stimulate warm water or a washing lotion.
- Also, please don't use any stuff which possibly damage its surface, such as a cleanser with polish gel or a washing brush.
- Please use it without damage its surface.
- Please don't put it on fire directly.

■ A structure



Perfect Lot Control ↓



● Note

Because the basic material is polyethylene, heat resistance is based on about 60°C.



FLURO BARRIER AMBER BOTTLES

LDPE HDPE OTHER

Code No.	Model	Mouth Inside Dia (mm)	External diameter x Overall height (mm)	Quantity (per case)
26230	500ml	ø 43	ø 78x152H	50
26231	1L	ø 43	ø 101x189H	50
26232	2L	ø 75	ø 127x234H	30

* Material / Body, Cap : HDPE (with surface fluoric treated)
Inner Seal : LDPE * With inner seal

 A new fluoro barrier bottle amber type is now on sale.
For storing any liquid which is easy to affected by light or have high volatility.



FLURO BARRIER PE TANK (Waste Fluid Tank)

LDPE HDPE OTHER

Code No.	Model	Mouth Inside Dia (mm)	Outer Size (mm)
25500	20L Wide Mouth	ø96	345x175x435H
25501	20L Narrow Mouth	ø51	345x190x420H

* With inner sea



Usage

For storing chemical or for waste fluid.



FLURO BARRIER ROUND TYPE WASH BOTTLE

PE OTHER

Code No.	Model (ml)	Quantity (per case)
26233	500	100

● Feature

- A new wash bottle is added in popular fluoro barrier series.
- Its surface is fluoric treated. It has great gas keeping and chemical resistance.
- It has a long life because it resists organic solvent.
- It is much cheaper compare to PFA wash bottles.

■ How to use

- Please wash it once before using.
Please avoid to use a brush or a cleanser for washing. It may damage the surface coating.
- Do not put on fire directly.

● Note Its heat resistance is until 60°C



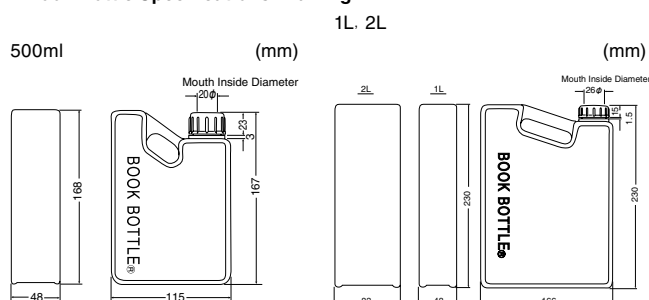
BOOK BOTTLES



Code No.	Model	Quantity(per case)
2300	500ml Transparent PP (No inner seal)	100
2208	1L Transparent PP (No inner seal)	50
2303	2L Transparent PP (No inner seal)	30
2120	5L Transparent PP (Has inner seal)	6
2121	10L Transparent PP (Has inner seal)	3

* The 5L and 10L types have a cap inner seal that is made of polyethylene so they cannot be autoclaved.

Book Bottle Specifications Drawing



Usage example: National Cardiovascular Center

Storage of the adjusted sample buffer (contents showed on label)
The conventional cylindrical bottles we used took up space. They were inconvenient as well because it was difficult to know where anything was, but when we switched to the book bottles, everything became neatly organized and they saved space, so they are very convenient.



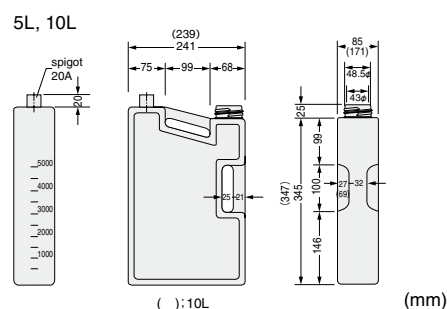
BOOK BOTTLE with spigot



Code No.	Model	Spigot Screw Size (mm)	Quantity (per case)
2122	5L (Has inner seal)	20A	6
2123	10L (Has inner seal)	20A	3

* Mouth Inside Diameter: 43 mmø
* Spigot: 20 A
* Leading end outside diameter: 17 mmø Inside diameter: 10 mmø
* The cap and inner seal are made of PE.

You can special order it in order to put spigot anywhere you want.



PE SQUARE CONTAINER CARBOY TYPE



Code No.	Model	Outside Dimention (mm)	Specification
2639	Flat Type 20L Wide Mouth	345 ×175 ×435H	with Inner Seal
91531	20L Two Mouths	350 ×180 ×410H	—



PE WIDE MOUTH BOTTLE with spigot

Code No.	Model	Spigot Screw Size (mm)	spec	Quantity (per case)
2095	5L	20A	Natural	15
2096	10L	20A	Natural	8
2097	20L	25A	Natural	3
2918	5L	20A	Light amber	15
2919	10L	20A	Light amber	8

* Each has an inner seal.
* The spigot is made of PP



PE WIDE MOUTH BOTTLE with spigot and handle

Code No.	Model	handle	Spigot Screw Size (mm)	spec
6521	5L	One hand	20A	Natural
6522	10L	Two hand	20A	Natural
2626	5L	One hand	20A	Light amber
2927	10L	Two hand	20A	Light amber

* Each has an inner seal.
* The handle and spigot are made of PP



PE SEDIMENTATION BOTTLE

Code No.	Model	Mouth
2995	5L	Wide mouth
2996	10L	Wide mouth
2997	20L	Wide mouth

* Spigot is installed about 1/3 from bottom.
* We can install it anywhere you want. Please ask us.



PE SQUARE CONTAINER CARBOY TYPE with spigot

Code No.	Model	Outside Dimention (mm)
2641	20L Narrow Mouth	350 ×180 ×435H
2642	20L Wide Mouth	345×175×435H

* Mouth Inside Diameter: Narrow Mouth 51mmø / Wide Mouth 96 mmø
* With Inner Seal and PP 25A Spigot.

You can special order it in order to put spigot anywhere you want.



PP SPIGOT

Code No.	Model	Screw Size
3040	20A	3/4"
3041	25A	1"

●Features

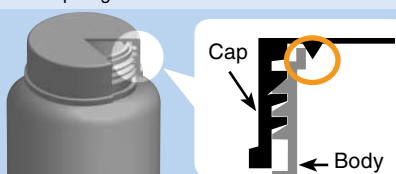
- We use PTFE ring and viton rubber for sealing.
- Please use a hose with inner diameter 15-16mmø in order to connect it.

SANPLATEC® Bottle Series



It keeps good sealing because of the special sealing structure, even without inner seal.

It prevents leakage by fitting inner corner and inner cap ring.



QUICK BOTTLE WIDE MOUTH (without inner seal)



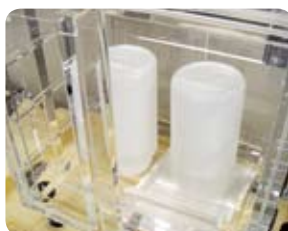
Code No.	Model	Mouth Inside Dia (mm)	External diameter x Overall height (mm)	Quantity (per case)
2080	20ml wide mouth	27ø	38 ø x 46	400
2081	30ml wide mouth	27ø	38 ø x 55	400
2082	50ml wide mouth	27ø	38 ø x 75	400
25010	100ml wide mouth	31ø	47.5ø x 95	200
25011	250ml wide mouth	33ø	62.5ø x 125	100
25012	500ml wide mouth	42ø	75 ø x 163	100
25013	1L wide mouth	41ø	95 ø x 197	50
25014	2L wide mouth	76ø	121 ø x 246	30

* The inner seal is not attached.

● Features

- This PE bottle has high sealing property with special sealing structure without inner seal.
- There is no necessity for removal of inner seal and work efficiency increases.
- Since the cap is clear, you can view the content from above.

The PE bottle with tight sealing without inner seal hit the streets!



Only a product which passed our strict testing can be sold.



It has special sealing structure, so there is no need to worry about liquid dripping even without middle cap.



It is possible to check the inside from above because cap is transparent.

PP BOTTLE WIDE MOUTH (without inner seal)



Code No.	Model	Scale	Mouth Inside Dia (mm)	External diameter x Overall height (mm)	Quantity (per case)
2040	20ml	×	27ø	38ø x 47	400
2041	30ml	×	27ø	38ø x 56	400
2042	50ml	×	27ø	38ø x 76	400
2043	100ml	○	32ø	48ø x 97	200
2044	250ml	○	33ø	63ø x 127	100
2045	500ml	○	42ø	75ø x 163	100
2046	1L	○	41ø	95ø x 200	50
2047	2L	○	76ø	121ø x 246	30

* The inner seal is not attached.

PP BOTTLE NARROW MOUTH (without inner seal)



Code No.	Model	Scale	Mouth Inside Dia (mm)	External diameter x Overall height (mm)	Quantity (per case)
2030	30ml	×	15ø	33ø x 66	400
2031	50ml	×	15ø	39ø x 76	400
2032	100ml	○	21ø	48ø x 98	200
2033	250ml	○	23ø	63ø x 125	100
2034	500ml	○	27ø	75ø x 164	100
2035	1L	○	32ø	95ø x 198	50
2036	2L	○	40ø	121ø x 246	30

* The inner seal is not attached.



● Features

- No middle cap and more operational.
- It has excellent heat resistance and clearness.
- Excellent test results for acid and alkali resistance.
- Operational one-touch bottles.

SEALED CONTAINER (Round Cap)



Code No.	Model	Volume (ml)	Total Height (mm)	Quantity(per case)
2150	No.1	105	61	300
2151	No.2	150	81	240
2152	No.3	250	82	120
2153	No.4	310	98	120
2154	No.5	470	102	80
2155	No.6	560	113	80
2157	No.8	770	130	60
2158	No.9	1100	175	40

* Each has an inner seal.

Specifications

Unit: mm

	Outside Diameter of Lid	Mouth Inside Diameter	Body Diameter
No.1・2	ø66	ø57	ø60
No.3・4	ø84	ø73	ø77
No.5・6	ø99	ø90	ø92
No.8・9	ø106	ø96	ø98

Convenient for storing or moving powdery or highly viscous materials.



SEALED CONTAINER (Flat Cap)



Code No.	Model	Bottom Diameter (mm)	Total Height (mm)	Quantity(per case)
2160	1L	ø115	114	60
2161	1.5L	ø115	159	40

* Each has:

Lid Diameter (mm): ø125

Mouth Inside Diameter (mm): ø115

* Containers can be specially ordered with various colors by lot. Please inquire for details.

* Containers can be specially printed with your original design by lot. Please inquire for details.



Perfect for any type of use.



SANPLATEC VESSEL



Code No.	Model	Body Diameter (mm)	Total Height (mm)	Quantity (per case)
26990	3.5L	159	258	30

* Size indicates volume.

* With inner cap.

* Total height includes a cap.

* Cap diameter (mm) : 164ø

* Mouth diameter (mm) : 147ø

Feature

- This cylindrical container is suitable for storage or transport paste material and high adhesive material.
- Handle is designed on cap in order to support easier transportation.



Suitable for Paste Storage



Easy Search on The Website

You can check more details of all items listed on Sanplatec catalogue from our official website. Not only check products information, but also it contains multiple convenient tools, such as search engine for plastic chemical resistance and movies of products usage.

sanplatec.co.jp/en/index |

Search



SANPLATEC® Life Science

Cultivation



Personal Incubator P-Box

Vertical Type code : 0156
Horizontal Type code : 0157

▶ P.54



SHellDish®

▶ P.50



TPX® Petri Dish

▶ P.55



Glass Bottom Dish

▶ P.51

Freeze



Chill Pocket™ Series

- | | | |
|---------------------|--------------------|-----------|
| 1 Ice Case | code : 26937-26938 | ▶ P.52-53 |
| 2 Cooling Container | code : 26565-26566 | ▶ P.52-53 |
| 3 Ice Rack | code : 26559-26564 | ▶ P.52-53 |
| 4 Screw Cap Opener | code : 26933-26936 | ▶ P.52-53 |
| 5 Multiple Stand | code : 26939 | ▶ P.52-53 |

Experiments on Animals



Mouse and Rat Adjuster

▶ P.56



CO₂ Anesthesia Units for Vinegar Fly

▶ P.56

Electrophoresis



Single-sided cooling style

▶ P.57



Density Gradient Device Round Type

▶ P.57

Better handling

The basement dish doesn't come with other dishes when they piled up together, or you accidentally drop the bottom part. Our dish will solve those problems.
Our shell dish's lid and basement dish won't separate accidentally because it has lock function.



(Ordinary Dish) It has a problem that lid and basement dish will separate easily.



(SHellDisH) It has lock function and easy handle structure so you can pick up it without separation.

Better pipet operation

Usually researchers are required accurate techniques in order to handle pipet without any contamination. Our dish has useful structure to open lid rapidly with single hand and can operate pipet at same time. Of course it decrease contamination risks a lot!



(Ordinary Dish) It requires practice for accurate operation.



(SHellDisH) It is possible to open and close by single finger.

Distinguish structure

We set up a place for index in basement dish, so it solves a problem, such as you cannot figure out what you write on lid when you stack several dishes. This structure helps people easy to find an index even you stack several dishes.



(Ordinary Dish) Index under first dish will be hidden.



(SHellDisH) It is possible to distinguish index part for all stack dishes.



SHellDisH® (Shell Dish)

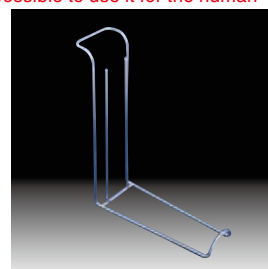
Code No.	Model	Quantity(per case)
26000	9020-C (for cell culture) case sales	200/case (10pack x20)
26002	Exclusive Use Stand	1
26003	Collagen I Coating	1

Specifications

Culture area 41.26cm²
Special processing for the inside surface of basement dish
Mirror finish for both surface of top and basement
Radiation sterilization
Out diameter 92mm xheight 20mm
Inside diameter 72mm xheight 16mm

Note

'SHellDisH' is experimental use. It is not possible to use it for the human body.



Exclusive Use Stand

The Cell Structure Test Result of SHellDisH

It is possible for steady cultivation and has good adhesive power because its cultivate surface is hydrophilicity treated.

You can download its cultivation data from our website.
Please check the detail about SHellDisH from following URL.



Hela Cell



CHO Cell

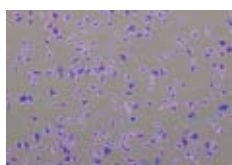


HEK293 Cell

>><http://www.sanplatec.co.jp/showPage.asp?pname=shelldish.html>

New Product! Collagen I Coating

It helps faster cultivate speed and has better cell adhesiveness.



Collagen coating test result.



Exclusive Use Stand

You can carry maximum five dishes at once very easily and safely.



LEAKAGE BLOCK DISH (for Cell Culture)



Code No.	Model	Amount (pcs)	Size (mm)
26100	TSC01	240	ø90

● Features

- Its structure stops leaked medium between outer and inner wall, so need to worry about leakage and contamination.
- Also, this double structure prevents finger directly to touch side wall and cause contamination. The virus on finger won't directly get into medium.
- It has excellent cell adhesiveness with special surface treatment,

■ Specification

Electron beam sterilization

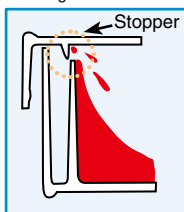
► Standard Item

Medium can leak from opening between cap and dish.



► This Item

① First, a protuberance on cap blocks medium leakage.



② Space between outer and inner wall keep leaked medium in order to prevent it flow to outside.



Its Inner Block Structure Prevents Leakage and Contamination of medium.



Suitable for Vivo Fluorescence



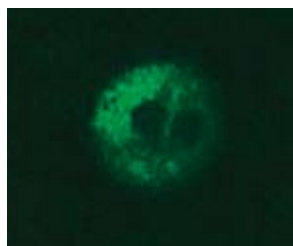
GLASS BOTTOM DISH



Code No.	Model	Hole Dia	Precoat	Cover	Amount (pc)
25134	35mmø Dish	14mmø	non-coat	No.0 Glass	10
25135	35mmø Dish	27mmø	non-coat	No.0 Glass	10
25136	35mmø Dish	14mmø	Poly-L-Lysine	No.0 Glass	10

● Features

- An opening under bottom of dish which cover slide glass, so it is suitable for an inverted microscope observation during cultivation.
- It uses slide glass at culture part, there is almost no intrinsic fluorescence.
- We offer product with PLL coat for better cell adhesiveness.



Fluorescent dyeing mitochondria with rhodamine123 and primary culture of rat liver cell which cultivate with code 25136.

It is able to control and cultivate under same condition.



MULTI-WELL GLASS BOTTOM DISH



Code No.	Hole Dia	Cover	Amount (pc)
25137	9.5mmø	No.1S	20

● Features

- It is not only has function of glass bottom dish, but also it can cultivate and observe control and sample under same condition with 4 wells.
- It equipped No.1S glass as the most suitable glass for microscope observation.

■ Specification

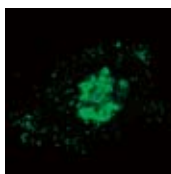
Dish Diameter: 35mm

Well Diameter: 9.5mm



Example of Usage

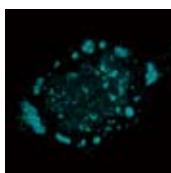
An image of Vero cell infected by herpes simplex virus (HSV) which fluoresce three pattern fluorescence.



Detect of capsid protein marked by Venus.



Detect of tegument protein marked by mRFP1.



Detect of rope protein marked by ECFP.



Differential interference image of infect Vero cell.

An Ice Rack with Stopper at Each Well In Order To Reduce Contamination Risks and Gain Rapid Operation.

Chill Pockets™ Series

Chill Pockets™ Series

NEW

- The new concept “Stopper” for metal ice rack.
- You can rotate a cap without to pick up tube itself.
- It has our original cool pocket design which is able to cool every single tube at same rate.
- Moreover, we prepare exclusive opener to reduce contamination risks and avoid hazardous materials attached.
- Also, we have rack without “Stopper” for micro tubes.



Chill Pocket Design Transfers Temperature to Every Single Tube.



- All tube holders are separate, so ice can cool all holders at same rate.
- Save materials and cost.

- These alminum tube holders are designed to hold 0.5ml, 1.5ml, 2.0ml screw cap tubes. Absolutely to transfer temperature.
- Tubes do not touch ice directly, so it is able to reduce contamination risks.



A Convenient Rotation Stopper Supports You to Open And Close Screw Caps with One Hand.



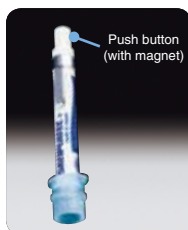
- The world first rotation stopper supports your one hand cap operation.

- Just rotating caps, no needs to pick up tubes.
- Also convenient for multiple pipetting.



◀ Ice rack without rotation stopper for micro tubes also available.

Securely Open and Close Screw Cap without to Touch It by Hands



OPEN and CLOSE

Insert opener to a cap tube

Open and close the cap by rotation

Hold the cap, do not occupy your hands

Never mind to find place to put screwcaps

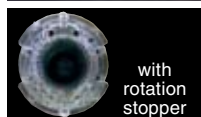
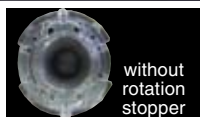
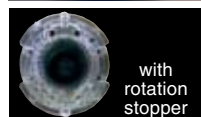
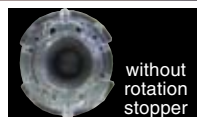
To Move

Insert opener to a cap tube

Hold it and move

Push button to separate

- We offer exclusive use opener which help you to avoid contamination risks.
 - It is able to easily open the freezed tube caps.
 - To combine with “Chill Pockets™”, you can avoid to pick up tubes directly, so it is possible to minimize the temperature effect.
 - It is able to move tubes without touch it by hand.
- (Please refer the right images.)

with
rotation
stopperwithout
rotation
stopperwith
rotation
stopperwithout
rotation
stopper

ICE CASE CHILL POCKETS™



Code No.	Model
26937	12Tube Holders with Rotation Stopper
26938	12Tube Holders without Rotation Stopper

* Material / Tube Holder : Aluminum
Case, Joint part, Base : PC

●Features

- Transparent case helps you to easily check ice condition.
- This case is designed to hold tube holder base even though ice is melted.
- Ice case equips injection point at both side, so it is able to directly pour water inside and start freezing.
- An aluminum tube holder is able to cool inside tube from every direction.
- Tube holder base is removable. You also can put crash ice or dry ice in this case.
- Ice case with rotation stopper for screw cap tubes, without rotation stopper for micro tubes. Autoclavable.

COOLING CONTAINER CHILL POCKETS™



Code No.	Model
26565	9Tube Holders with Rotation Stopper
26566	9Tube Holders without Rotation Stopper

* Body : PE, Base : PC
Tube Holder : Aluminum, Joint Parts : PC
* Total 9 tube holders (both types)

●Features

- A compact tube cooler which save space in freezer.
- An aluminum tube holder that fits tube, which can cool inside material from every direction.
- This container includes refrigerant which wrap tube holder.
- It keeps a low temperature (around 0°C) for 60 min. at outside of freezer.
- You can check inside for the container is over 0°C or not by checking the color of refrigerant.

MULTI-STAND



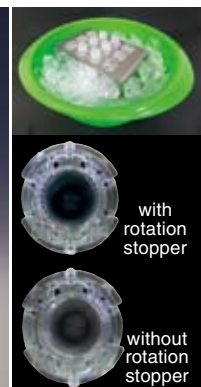
Code No.	Model
26939	MS-1

* Outer size (mm) : 250Wx320 to 550H
* Material / Body : Steel (Chromium Plating),
Grip Part : Polystyrene

●Features

- It is able to hold openers and avoid contamination risks ! It has convenient function for other usages.
- Support is elastic and height is adjustable.
- In order to hang a nozzle of wash bottle when refill inside liquid.
- For protocol holder.
- In order to hang other labware, such as protection glasses and watches.

Ice Rack with Rotation Stopper Supports You To Open and Close Screw Cap with One Hand

with
rotation
stopperwithout
rotation
stopper

ICE RACK CHILL POCKETS™



Code No.	Model
26559	6 Tube Holders with Rotation Stopper
26560	12 Tube Holders with Rotation Stopper
26561	24 Tube Holders with Rotation Stopper
26562	6 Tube Holders without Rotation Stopper
26563	12 Tube Holders without Rotation Stopper
26564	24 Tube Holders without Rotation Stopper

* A rack with rotation stopper fits Assist tubes, Watson tubes, and Sarstedt tubes.
* Material / Body : Stainless Steel, Tube Holder : Aluminum, Joint Parts : PC

●Features

- It is made of stainless steel which has good cooling function, and tube holder is made of aluminum.
- Its holder size is designed to fit tubes (Chill Pocket design), so it is able to freeze tubes from every direction.
- A rack with rotation stopper can match with screw cap tube. You can open its screw cap while the rack holds screw cap tube.
- This rack is designed to get balance on ice water.
- Each aluminum holder is separated, so ice is more easily to touch with each holder and you can expect better cooling function. (Chill Pocket design)

Easy to Open and Close Cap without Touch It by Hand



SCREW CAP OPENER



Code No.	Model	Specification
26933	Opener (with a blue refill)	for cap diameter 13 - 13.5mm
26934	Opener (with a natural refill)	for cap diameter 12 - 12.5mm
26935	Replacement Blue Refill 5 packs	for cap diameter 13 - 13.5mm
26936	Replacement Natural Refill 5 packs	for cap diameter 12 - 12.5mm

* Material / Body : PVC, Backside : Neodymium magnet,
Refill Part : Polyurethane

●Features

- We introduce this exclusive use opener to reduce contamination risks, and avoid to directly touch dangerous materials, such as RI (Radiolotope) and virus.
- It is designed to pick up and move tubes.
- It can separate the tube after push the button at back side.
- We have optional refill for exchanging the head part.

■Specification

Available tubes

- 13mm - 13.5mm (ex. Nalgene, SARSTEDT tubes)
- 12mm - 12.5mm (ex. Nalgene, SARSTEDT tubes)

Blue Refill (for cap
diameter 13 - 13.5mm)Natural Refill (for cap
diameter 13 - 13.5mm)

P-BOX (Compact Incubator)

Code No.	Model	Specifications
0156	Main unit vertical setup	One shelf for vertical setup
0157	Main unit horizontal setup	One shelf for horizontal setup
0158	Shelves for vertical setup	1 shelf
0159	Shelves for horizontal setup	1 shelf

* When running for extended periods continuously, the ambient temperature should be as stable as is possible.

Specifications

	Vertical setup type	Horizontal setup type
Type	Air jacket	
Temperature adjustment range	(Ambient temperature + 5°C) to 45°C	
Tub inside dimensions	220W × 300D × 270H mm	310W × 300D × 185H mm
Inside volume	Approx. 18L (including door)	Approx. 17.5L (including door)
★ Effective inside volume	220W × 300D × 235H mm	310W × 300D × 148H mm
Outside dimensions (including projecting portions)	309W × 362.5D × 458.5H mm	455.5W × 362.5D × 312H mm
Total weight	Approx. 5.5kg	Approx. 4.8kg
Tub material	Cold-rolled stainless steel [SUS304]	
Outer packaging material	ABS/AS	
Heater	Mica heater 100V 130W	Silicon rubber heater 100V 130W
Temperature sensor	Liquid expansion type thermo-detector contact point thermostat	
Overheating prevention device	Thermostat – manual recovery type	
Power	AC100V 50/60Hz	
Maximum power consumption	130W	
Accessories	Shelves (stainless steel), Stem thermometer	



* Performance outlined in the specifications applies to an ambient temperature of 23°C (when there is no load).
★ Effective Inner Volume: Inner volume when setup shelf is always on the bottom level.

Note

- We only have 100V specification.
- It requires additional transformer in order to use it in other countries.

Use for food bacteria tests or to incubate anaerobic bacteria.



Features

- Compact and does not take up space: Perfect for setup in narrow locations.
- Lightweight so it is easy to carry.
- The inner tub has a special surface treatment so bacteria will not adhere to surfaces.
- Temperature adjustments are easy; you can tell if the heater is on or off using the pilot lamp.
- Has a cable hole so you can record the change over time of the temperature sensor.

Safety

Overheat prevention mechanism which uses a manually recovered thermostat prevents excessive temperature from rising.

Usage Example

For maintaining samples handled on the clean bench until placed in a large incubator.
For chair-side anaerobic incubation for dentists and detecting the campylobacter or helicobacter in food hygiene inspections using an anaero pack.

VOLTAGE CONVERSION CHART

P.25

EASY CELL CULTURE KIT

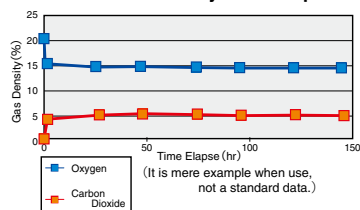
Code No.	Model
26991	P-BOXT-2.5J-CP (vertical setup)
26992	P-BOXY-2.5J-CP (horizontal setup)

Maximum Amount to Place Inside of Square Jar as Your Reference.

Item	Size	Amount
Cell Culture Dish	35 øx12	60pcs
	60 øx15	16pcs
	100 øx20	6pcs
Cell Culture Plate	6well	3pcs
	12well	3pcs
	24well	3pcs
	96well	4pcs

Culture Pal® CO₂ Gas

Density Time Elapse Graph



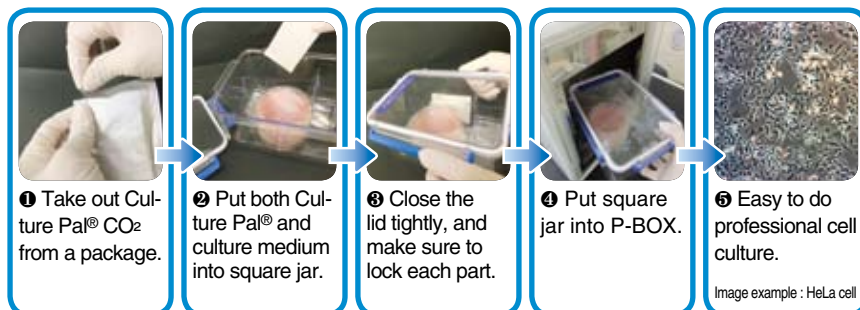
After open Culture Pal® CO₂, it absorbs inside oxygen and generates carbon dioxide in order to create environment with 15% oxygen and 5% carbon dioxide.

Note

- You must prepare exclusive use square jar to set Culture Pal® CO₂.
- When you start culturing, the bag not only generates dioxide, but also generates small amount of by-products such as, aldehyde kind and carbon monoxide. Please make sure it will not affect your experiment before start cell culting.
- CO₂ bag starts reaction immediately, so you must act quickly to put the bag into square jar after unpack aluminum package. (within one minute)
- This product is not medical kit. Please use this kit with care.



A compact personal incubator with good cost performance.
Power source input in the rear.
Light weight (only 5kg), easy to carry.



Kit Contents

P-BOX (incubator) vertical type or horizontal type (item code : 0156 or 0157) 1 unit,
Exclusive use jar 2.5L (item code : 13998) 1pc
Culture Pal® CO₂ (item code : 26530) 1 set (20pcs)

Features

- Simply take out the bag from aluminum package and put it into exclusive use square jar, it keeps inside density of carbon dioxide around 5%.
- Place one bag in square jar can keep inside density of carbon dioxide around 4 - 6% for 24 hours.
- Simply put it into incubator "P-BOX" and start cell culturing.
- P-BOX uses dial to control inside temperature, keeping around 35 - 37°C.
- No need for expensive gas cylinder and CO₂ incubator.
- Culture Pal® reduces risk of a microorganism contamination when apply γ ray.
- No cross contamination risks by culturing inside jar.

TPX® PETRI DISH

PMP

Code No.	Model	External diameter × Overall height (mm)	Quantity (per case)
2360	shallow	90.5ø×17.5	360
2361	deep	90.5ø×21	290

●Features

- TPX® petri dish has good heat and chemical resistance.
- Autoclavable (121°C)
- Shallow and deep types.



Autoclavable



SHELLDISH® (Shell Dish)

PS

Code No.	Model	Quantity(per case)
26000	9020-C (for cell culture) case sales	200/case (10pack x20)

■Specifications

Culture area 41.26cm²
 Out diameter 92mm xheight 20mm
 Inside diameter 72mm xheight 16mm

●Note

'ShellDish' is experimental use. It is not possible to use it for the human body.



SQUARE JAR

Code No.	Volume
13998	2.5L

●Features

- It can cell culture round dish 12 pcs and micro plate 6 pcs at once.
- It is also available to cultivate in small size incubator.
- It is able to do anaerobic culture with combination of anaero pack



ANAERO PACK KENKI

Code No.	Model	Amount
13990	Only Substance (for jar)	50 pcs
13992	Anaero Pack Kenki 5%	20 pcs

* An aim of amount / until 2.5L : 1 bag

●Features

[For Jar]

It can reduce oxygen percentage under 0.1% within 2 hours

[Anaero Pack Kenki 5%]

It creates environment of O₂ density under 1% and CO₂ density around 5% within 1 hour.



CULTURE PAL® CO₂

OTHER

Code No.	Model	Standard	Amount
26530	CP-1	for 2.5L	20 pcs

* Standard amount indicates square jar volume.

* Culture PAL is a registered trademark of Mitsubishi gas chemical.

●Features

- It creates environment of oxygen density 15% and carbon density 5% by only open aluminum package and put inner bag into a square jar.
- Inner carbon gas density will change to 4 - 8% range after 24 hours.
- Culture Pal reduces risks of life contamination by γ ray irradiation.



Usage

- For cultivating carbon gas related bacteria, such as Haemophilus and Neisseria.
- For cultivating, observing, and transporting cells.

●Note

- You need square jar in order to use Culture Pal® CO₂.
- A vice-generative production (carbon monoxide and Aldehyde kind) may appear during cultivation.
- After open the aluminum bag, it quickly starts reaction. Please quickly move the inner back into square jar. (about a minute)
- This item cannot be used as medical purpose.



RAT FIX ADJUSTER

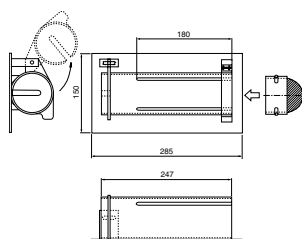


Code No.	Model	Rat Fix Size (mm)
13303	RAT KK	ø78x50(minimize) – 210(maximum)

Features

- It has similar design compare to mouse adjuster in order to prevent a rat run away and death by suffocation.
- Rat adjuster has additional backside door for higher workability.

Specification



Catch A Mouse for More Stable and Efficient Work !!

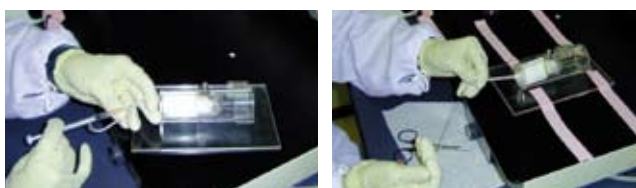
MOUSE FIX ADJUSTER



Code No.	Model	Mouse Fix Size (mm)
13302	MOUSE KA	ø31x20(minimize) – 80(maximum)

Features

- It has stable base, helps you to work easier.
- Just fit to mouse head, so it holds mouse securely. Also, it equips wire to avoid mouse death by suffocation.
- Also, it is designed to prevent mouse run away.



CO₂ ANESTHESIA UNITS for Fly



Code No.	Model	Outside dimensions (mm)	Size of anesthesia area (mm)	Application tube inner diameter (mm)
26010	KK-1	123Wx83Dx21H	114Wx73D	8 ø

* Table top material : Plastic Sintering Porous Media

Features

- It is possible to do efficient insect anesthesia with carbon dioxide gas.
- You can start more accurate examination because CO₂ anesthesia has less stress to vinegar fly compare to ether anesthesia.
- Also, it has stopper at bottom for more efficient work.

Note

It may damage acrylic parts if you use alcohol to wash or sterilize surface.



ANESTHESIA BOX



Code No.	Model	Inner Size (mm)
25118	MAB-1	250Wx200Dx250H
25119	MAB-2	500Wx350Dx300H

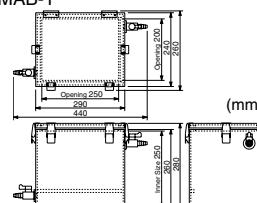
Features

- Introducing anesthesia gas inside via attached valve.
- Also possible to fill cotton at bottom by using attached shelf plate.
- Also it is possible to set a tray.

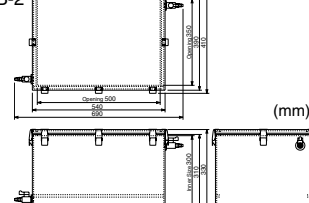
Specification

Model	MAB-1	MAB-2
Inner Size (mm)	250Wx200Dx250H	500Wx350Dx300H
Outside Dimension (mm)	440Wx260Dx280H	690Wx410Dx330H
Inner Volume (L)	16	60
Body Material	PVC	
Valves	2 pcs. Nozzle diameter ø8 to ø16mm, material : PVC	
Rack shelves	PVC Perforated Plate (Two Division) Hole Diameter 5mm pitch 12mm	
Weight	Approx. 4.0kg	Approx. 9.2kg

MAB-1



MAB-2



PETRI MULTI RACK



Code No.	Model
26940	90mmø · for 5 pcs
26941	90mmø · for 10 pcs

* Material Frame:PP, Lug:Polycarbonate

Features

- Good at storing petri dish with agarized medium.
- It can put in and out, turn over, open lid, move, and store with smooth operation.
- Autoclavable

Usage

Convenient for rack of petri dish.

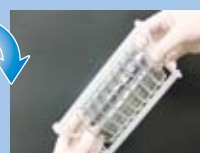


Easy to put in and out from side!



An original simple design to change interval between each frame. It can put in and out of petri dish even from middle.

It is possible to turn over whole petri dishes!



You can turn over whole petri dish with rack.

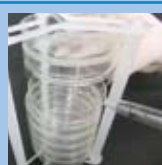
It is suitable to put into incubator for cultivate.

Secure to carry with rack!



You can move whole petri dishes simply hold top of the rack. It can prevent accident during transportation.

Easy and secure to open can close lid even at middle level.



This frame is designed to hold petri dishes.

Storage with less space!



There is no space loss to store petri dish.

Easy to store in incubator.



SINGLE-SIDED COOLING MINI SLAB



Code No.	Model	Size of Plate
13007	Allegro I	106×100H

SINGLE-SIDED COOLING SLAB



Code No.	Model	Size of Plate
13008	Allegro II	160×160H

Attachment

	Single-sided cooling mini slab	Single-sided cooling slab
Plate	Size (mm) : 160×160H, Amount : 1pair	Size (mm) : 106×100H, Amount : 1pair
Comb	Thickness 1t : 14well, Amount : 1pc	Thickness 1t : 12well, Amount : 1pc
Gel Sealing	Thickness 1mm, Amount : 1pc	Thickness 1mm, Amount : 1pc
Clip	4pcs	2pcs
Lead	1pair	1pair

Single-sided cooling style

- It is suitable for phoresis of active samples which require cool phoresis under constant temperature.
- Single-sided cooling style realizes short time phoresis with high detachment and reproducibility by spreading Joule heat to prevent smiling phenomenon and denaturation of gel.
- Cool phoresis under constant temperature is able to set wide range phoresis.

Efficient design for increasing working property.

- Upper and bottom buffer tanks are detachable, very convenient for handling and wash.
- Its sealing is detachable with original structure. Also, it is very simple to attach by just fit the sealing into ditch. Moreover, there is no worry about leakage with round shape sealing.
- Glass plate has good cooling result with 3mm thickness.



DENSITY GRADIENT DEVICE ROUND TYPE



Code No.	Model	Total Volume (ml)	Pipe Height (mm)	Pipe Inner Dia (mm)
4023	No.1	10 - 15	90	10ø
4024	No.2	30	90	16ø
4025	No.3	80	100	24ø
4026	No.4	200	110	36ø
4027	No.5	400	110	50ø
4028	No.6	1000	130	74ø
4029	No.7	2000	150	104ø
4030	No.8	4000	200	122ø

* With cap to prevent dust and trash.

* Outer diameter of valve is 4ø for tube connector.

* Total volume includes both valves.

Features

- It can be used on magnetic stirrer.
- It is able to check liquid amount with scale.
- It is suitable to make polyacrylamide gradient gel.

Amazing! Magical Ink to Teleport All Letters!

TelepoMarker™

TelepoMarker™

- An exclusive use maker for laboratories.
- Write Letters by Telepo-Marker on a transfer plate (Telepo-Board), then transfer all letters to transparent tape and just paste anywhere you want.
- All letters are stick on backside of tapes, so it means letters will not disappear by chemical and rubbing.
- You are able to write letters on flat Telepo-Board. It is easier to labeling on small sample vials or round containers.
- Possible to operate with quick hand writing.
- You don't have to purchase special tapes for this marker.



TELEPO MARKER™

Code No.	Description
26550	A Black Marker + Telepo Board 1pc
26551	A Red Marker + Telepo Board 1pc
26552	A Blue Marker + Telepo Board 1pc
26553	Black Marker 3pcs
26554	Red Marker 3pcs
26555	Blue Marker 3pcs
26556	Black, Red, Blue Set. Each 1pc
26557	Telepo Board 1pc

●Features

- Marker with black, red, blue color.
- It is easy to write letters with narrow pen head.
- The marker won't left on Telepo-Board, so you can repeat to use it.
- Also, it is convenient because the width and length of the Telepo-Board is designed to adjust the diameter of microtubes and centrifuge tubes.

●Note

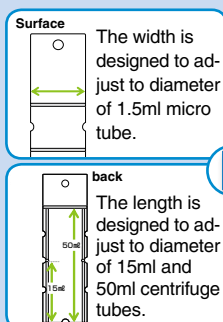
- You must prepare the Telepo-Board in order to move letters.
- When you don't use Telepo-Marker, please close its pen cap tightly, and store it under horizontal position.
- Place this marker under vertical position for long time may cause leakage or dry of its ink.

Magical Ink with Special Plastic Board to Transfer All Letters.

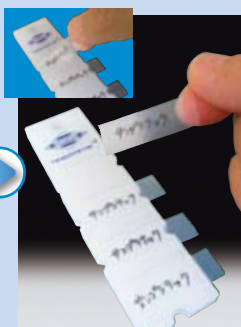


Sanplatec Solves Any Problem of Labeling !

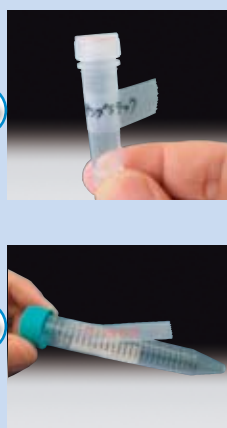
① Pick up Telepo-Marker and write letters on Telepo-Board.



② Move letters to transparent tapes.



③ Just paste it.



Just teleport letters from Telepo-Board to transparent tape!!

- All letters stick to backside of the tape. So letters won't disappear even people scratch it, or chemical and frost touch it.
- You are able to write letters on flat Telepo-Board. It is easier to labeling on small sample vials or round containers.
- It is able to operate with quick hand writing.

MAGNETIC STIRRER

Code No.	Model
3800	SMS-1
3801	SMS-4
3802	SMS-6

* Materials / Body: SUS304, Table Top : Rigid Polyvinyl Chloride

Features

- Steady and thin type stirrer.
- Secure type with DC brushless motor.
- Single(SMS-1), 4 channel(SMS-4), 6 channel(SMS-6), all three types.
- SMS-4 and SMS-6 type have independent control switch.
- Body is SUS304, table top is PVC, so the set mark won't disappear even with repeat use.
- It has great chemical resistance.



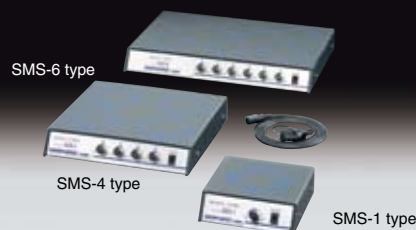
Note

- We only have 100V specification.
- It requires additional transformer in order to use it in other countries.

VOLTAGE CONVERSION CHART



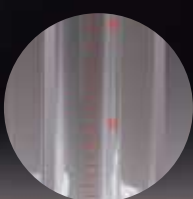
One of the popular item!!
It rotates steady and its body is chemical resistance!
It is possible to control each area.



Specification

	SMS-1 type	SMS-4 type	SMS-6 type
Size	190×204×65H	330×324×65H	480×324×65H
Revolutions Per Minute	200 ~ 1400rpm		
Available Volume	50ml ~ 3000ml	50ml ~ 3000ml×4	50ml ~ 3000ml×6
Material	Body : SUS304 Table Top : PVC		
Power	AC100V		

Easy to check
with red color scale



TRANSPARENCY METER



Code No.	Model	Drain Tube (Attachment)
1262	300 type set	150mm
1264	Cylinder for 300 type	—
1263	500 type set	150mm
1265	Cylinder for 500 type	—
1267	1000 type set	150mm
1268	Cylinder for 1000 type	—

* Specification

300 type set: transparency meter(300mm), stand, sign
500 type set: transparency meter(500mm), stand, sign
1000 type set: transparency meter(1000mm), stand, sign

* Stand Size(mm)

300 type 100×100× 325H
500 type 100×100× 525H
1000 type 200×200×1000H

Features

Attached with clamp. (for drain tube)

TIP WASHER



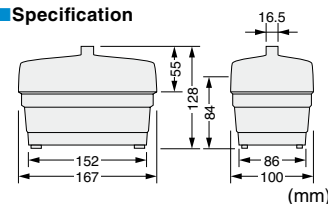
Code No.	Model
4260	TW

* Specification : Washer Body, Tip Board (6.5ø taper x 96 well, 5.5ø straight x 96well), water hose (1m).

Features

Simple to use. Set tip, and just flow water.

Specification



PIPETTE WASHER (Body)



Code No.	Model	Inner size (mm)
1206	A-1	180ø ×625H
1207	A-2	150ø ×500H
1208	A-3	125ø ×440H

* Siphon part with flexible handle. Easy to move around the siphon.

WASHING BASKET



Code No.	Model	Outer size (mm)	Available Washer	Available Sulfuric Acid Tank
1210	B-1	175ø ×550H	A-1	D-1
1211	B-2	140ø ×460H	A-2	D-4
1212	B-3	120ø ×430H	A-3	D-5
1213	B-4	175ø ×600H		
1214	B-5	140ø ×600H		

* Basket size is outer diameter of handle part.

Siphon Method.
You can check inside with transparent body.



PIPETTE WASHING BASKET



Code No.	Model	Specification
1215	AB-1	A-1 + B-1
1216	AB-2	A-2 + B-2
1217	AB-3	A-3 + B-3

■ SANPLATEC® Official Website “Pla.com”

Lab Equipment

- Desiccator (Portable) (10)
- Desiccator (Vacuum) (15)
- Glove box (Vacuum) (1)
- Glove box (Plasma)
- Sterile box (3)
- Incubator

Desiccator (Portable)

product name	Super Dry Keeper Extra (Anti-Desiccator)	Super Dry Keeper Standard (Anti-Desiccator)	Dry Keeper Anti-C type (Anti-Desiccator) (D)	Dry Keeper Anti-A type (Anti-Desiccator) (D)
Material	Body cabinet:PVC, Frame:ABS	Body cabinet:PVC, Frame:ABS	Body cabinet:PVC, Frame:ABS	Body cabinet:PVC, Frame:ABS
Outside Dimension(mm)	312W x 390D x 617H	312W x 390D x 617H	312W x 390D x 617H	614W x 390D x 345H
	Desiccant:ZnCl ₂ ▶ Detail	Desiccant:ZnCl ₂ ▶ Detail	Desiccant:ZnCl ₂ ▶ Detail	Desiccant:ZnCl ₂ ▶ Detail
	* Vertical type			* Horizontal type

Sanplatec Official Website “Pla.com”



Our company website “Pla.com” is an internet shop and about 30,000 users having access monthly.

Only maker is capable to offer such rich information and various items, and our website has all re-searchable, buyable, and usable quality.

Much items detailed information, such as “DRY-KEEPER”, “GLOVE BOX”, “VACUUM DESICCATOR”, and “FLUORO LINE”, is published.

■ Convenient Contents “Chemical Resistance for Plastics”

General Chemical Resistance for Plastics & Rubbers

The chemical resistance of material can be easily searched chemical basis.

There are as many as 174 pattern chemicals to be searched!!
→ (How to use "General Chemical resistance")

Select Chemicals

Search the chemical: [] Search

Select Materials

Search the material: [] Search

Search database of chemical resistance under above condition.

General Chemical Resistance for Plastics & Rubbers

The chemical resistance of material can be easily searched chemical basis.

The chemical resistance of material can be easily searched chemical basis.

- 1 Select the category of chemical from listbook.
- 2 Select the chemical from listbook.
- 3 Select the plastics material from listbook.
- 4 Select “Search database of chemical resistance under above condition” bottom.

The meaning of message

Excellent : There is not all or most influence.

Good : Minor Effect. There is not most influence.

Fair : Moderate Effect. There is somewhat influence.

Poor : Severe Effect. There is influence.

N / A : Sorry, There is no relevant date.

General Chemical Resistance for Plastics & Rubbers

The chemical resistance of material can be easily searched chemical basis.

There are as many as 174 pattern chemicals to be searched!!
→ (How to use "General Chemical resistance")

Select Chemicals

Search the chemical: [] Search

Select Materials

Search the material: [] Search

Search database of chemical resistance under above condition.

Search Result

Resistance of "Hydrochloric acid" and "Polyethylene"

Excellent!

There is not all or most influence.


















→ Search again

ALPHABETICAL INDEX

ACRYLIC VACUUM DESICCATOR MB Type	20	PE SEDIMENTATION BOTTLE	46
ACRYLIC VACUUM DESICCATOR SB Type	19	PE SQUARE CONTAINER CARBOY TYPE	45
ACRYLIC VACUUM DESICCATOR SB- II Type	19	PE SQUARE CONTAINER CARBOY TYPE with spigot	46
ACRYLIC VACUUM DESICCATOR SNH Type	18	PE WIDE MOUTH BOTTLE with spigot	46
ACRYLIC VACUUM DESICCATOR SNO Type	18	PE WIDE MOUTH BOTTLE with spigot and handle	46
ACRYLIC VACUUM DESICCATOR SNS Type	19	PETRI MULTI RACK	57
ACRYLIC VACUUM DESICCATOR SNW Type	18	PFA GAS WASH BOTTLE	32
ACRYLIC VACUUM DESICCATOR UB Type	20	PFA GRAD	34
ACRYLIC VACUUM DESICCATOR UB-D Type	20	PFA GRADUATED CYLINDERS	33
ACRYLIC VACUUM DESICCATOR YB Type	18	PFA NARROW MOUTH BOTTLE	30
ACRYLIC VACUUM GLOVE BOX (Dome Type)	10	PFA NARROW MOUTH BOTTLE (with Spigot)	32
ACRYLIC VACUUM GLOVE BOX (Square Type)	10	PFA NARROW MOUTH WASH BOTTLE	32
ACRYLIC VACUUM GLOVE BOX M-600H Type	10	PFA PIPETTE	34
ACRYLIC VACUUM GLOVE BOX VG-800 Type	9	PFA TEST TUBES	34
ACRYLIC VACUUM GLOVE BOX VSC-1000 Type	9	PFA TEST TUBES with Scales and Caps	34
ACRYLIC VACUUM GLOVE BOX 'CLEAR VIEW'	8	PFA TUBE	38
AIRLESS PUMP	22	PFA TUBE (Inch Size)	38
ANAERO PACK KENKI	55	PFA VOLUMETRIC FLASK	33
ANESTHESIA BOX	56	PFA WIDE MOUTH BOTTLE	30
BOOK BOTTLE with spigot	45	PFA WIDE MOUTH WASH BOTTLE	32
BOOK BOTTLES	45	PIPETTE WASHER (Body)	59
Clean Pack PFA NARROW MOUTH BOTTLES (Without Inner Seal)	31	PIPETTE WASHING BASKET	59
CLEAN UNIT	28	POLYCARBONATE VACUUM DESICCATOR	22
CO ₂ ANEST UNITS for FLY	56	PORTABLE VACUUM DESICCATOR	19
COMPACT TYPE OIL-SEALED ROTARY VACUUM PUMP GLD	11	PORTABLE VACUUM PUMP	21
COOLING CONTAINER CHILL POCKETS	53	PP BOTTLE NARROW MOUTH (without inner seal)	47
CULTURE PAL® CO ₂	55	PP BOTTLE WIDE MOUTH (without inner seal)	47
D-BOX (Auto-type Desiccator)	26	PTFE BEAKERS	36
DENSITY GRADIENT DEVICE ROUND TYPE	57	PTFE CAPS for PFA TEST TUBES	34
DOVE TYPE GAS REPLACEABLE GLOVE BOX	12	PTFE DECOMPOSITION VESSELS	35
DRY-KEEPER A-type (Non-auto Type)	24	PTFE FLAT SHAPE TWEEZER with Guide	37
DRY-KEEPER AUTO A-type	24	PTFE HEATABLE BEAKERS	36
DRY-KEEPER AUTO C-type	24	PTFE PETRI DISH	36
DRY-KEEPER C-type (Non-auto Type)	24	PTFE ROUND BOTTOM DECOMPOSITION VESSEL	35
EASY CELL CULTURE KIT	54	PTFE SPATULA Trapezoid Type	37
E-BOX (Non Auto-type Desiccator)	26	PTFE SPATULA Half Moon Type	37
EXCLUSIVE USE PACK	22	PTFE SQUARE BOTTLES	35
FAN UNIT	28	PTFE TAPERED TWEEZER with Guide	37
FLUORIC RESIN FILTER HOLDER	37	PTFE THICK BEAKERS	36
FLUORO BARRIER AMBER BOTTLE	44	PTFE TUBE	38
FLUORO BARRIER BOTTLE	44	PTFE WIDE MOUTH BOTTLES	35
FLUORO BARRIER PE TANK (Waste Fluid Tank)	44	QUICK BOTTLE NARROW MOUTH (without inner seal)	47
FLUORO BARRIER ROUND TYPE WASH BOTTLE	44	QUICK BOTTLE WIDE MOUTH (without inner seal)	47
FORMATION HOOD BODY	28	RAT FIX ADJUSTER	56
GAS REMOVABLE WASH BOTTLE	43	SANPLATEC VESSEL	48
GAS REPLACEABLE GLOVE BOX DX- II Type	12	SCREW CAP OPENER	53
GAS REPLACEABLE GLOVE BOX G Type	12	SEALED CONTAINER (Flat Cap)	48
GAS REPLACEABLE PORTABLE VACUUM SAMPLING BOX	21	SEALED CONTAINER (Round Cap)	48
GLASS BOTTOM DISH	51	SHellDisH® (Shell Dish)	50-55
GLOVE BOX COMPACT	14	SHellDisH® (Shell Dish) Collagen I Coating	50
GLOVE BOX COMPACT VACUUM TYPE	11	SINGLE-SIDED COOLING MINI SLAB	57
GLOVE BOX COMPACT VACUUM WITH STERILIZATION LAMP	14	SINGLE-SIDED COOLING SLAB	57
GLOVE BOX INNER GLOVE (Fit Long Glove)	15	SOFT WASH BOTTLE 'Softy'	43
GLOVE FREE PORT	15	SPARE PARTS FOR STERILIZED BOX	15
GRAND PFA BEAKER (with Handle/without Handle)	33	SQUARE JAR	55
HYDROCHLORIC ACID WASH PFA BOTTLES	31	STERILISE BOX (Nomal MA Plate)	13
HYDROFLUORIC ACID WASH PFA BOTTLES	31	STERILISE BOX (with Sterilize Lamp Resist Plate)	13
i-BOX (Auto-type Desiccator)	25	SUKIMA STOCKER	27
i-BOX (Non Auto-type Desiccator)	25	SUPER DRY KEEPER EXTRA (Auto Deaiccator)	23
ICE CASE CHILL POCKETS™	53	SUPER DRY KEEPER STANDARD (Auto Deaiccator)	23
ICE RACK CHILL POCKETS™	53	TELEPO MARKERTM	58
IN - OUT VALVE	27	TIP WASHER	59
LEAKAGE BLOCK DISH	51	TPX® BEAKERS	40
LID for TPX® BEAKER	40	TPX® CHECK VALVES	42
MAGNETIC STIRRER	59	TPX® GRADUATED CYLINDER	41
METER GLASS	40	TPX® GRADUATED CYLINDER PREMIUM	41
MINI DESICCATOR CABINET	26	TPX® HIGH SPEED FUNNELS	40
MINI DESICCATOR CABINET Smoke-transparent Type)	26	TPX® PETRI DISH	55
MOBILE DESICCATOR	27	TPX® TUBING CONNECTORS Taper-type Different diameter	42
MOBILE LAB SPACE CUBIC TYPE	14	TPX® TUBING CONNECTORS Taper-type I pattern	42
MOUTH FIX ADJUSTER	56	TPX® TUBING CONNECTORS Taper-type T pattern	42
MULTI-STAND	53	TPX® TUBING CONNECTORS Taper-type Y pattern	42
MULTI-WASH BOTTLES	43	TRANSPARENCY METER	59
MULTI-WELL GLASS BOTTOM DISH	51	VACUUM GAUGE ADAPTOR	21
NEW LONG ELAST BUTYL	15	VACUUM DESICCATOR PIPED TYPE	21
NEW LONG ELAST HYPALON	15	WASHING BASKET	59
P-BOX (Compact Incubator)	54		

Key to Icons

The icons in products page expresses the main materials of products

 PE	Polyethylene	 PS	Polystyrene	 PFA	Fluorocarbon polymers (PFA)
 PP	Polypropylene	 AS	Stylene Acrylonitrile copolymer	 PTFE	Fluorocarbon polymers (PTFE)
 PVC	Polyvinyl chloride	 PET	Polyethylene terephthalate	 Al	Aluminum
 PC	Polycarbonate	 HDPE	High Density Polyethylene	 SUS	Stainless steel
 PMP	Polymethylpentene	 LDPE	Low Density Polyethylene	 OTHER	Other material
 MA	Poly methyl methacrylate	 ABS	Acrylonitrile Butadiene Styrene copolymer		

* TPX® (PMP) is registered trade mark of Mitsui Chemical Ltd.
Its official name is polymethylpentene(PMP).

Sanplatec, change the future of plastic technology.

Sanplatec was established in 1960 as an experimental equipment manufacturer.

We introduced high transparency plastic products in very early time when people still used glass experimental tool.

After that, we became the pioneer of this industry to lead market, and now we sell our useful products to many different fields such as government offices, university, domestic companies, and medical institution.

Experimental tools have to update with scientific development.

We always care about our customers when we make products, and we keep this stance for over 50 years.

First, we listen to our customers' demand, searching for needs and problems, and then developing products by using our own technology.

Also, we always promise the best qualities.

We believe that it is our duty to support the future of technology.

We keep walking with market demands.

We aim to become 'the best partner' to our every customer.

Planning

Obtaining every demands and offering new 'value manufacturing'.

Our concept is 'make products from side of customers'. Not only visiting our customers by our marketing staff, but also we use every tool, such as our web site and exhibition, to searching customers' problems and demands. Our planning and developing department share all information, trying to develop every detail idea with the believe of 'making more convenient products'. We complete our products by testing and market research. The additional value of our products is from our customers' idea.

Products

Various type products used in every field.
You can find any products you want.

Sanplatec mainly make plastic products which are very useful in experiment and research scene. We have top-class variation in this industry. We sale many kinds of new products every year. We promise better 'usage', 'quality', and 'price' to our customers.

Qualities

We only sale products which passed our strict quality control. This is our pride and responsibility.

Sanplatec consider complete quality control very seriously because we want our customers love our products. For example, we have meeting with our factory staff constantly, discuss about how to fix problems in both qualities and supply. We check every manufactory steps, and only ship products which passed quality test in both factory and Sanplatec.

If quality loss is happened, we will share this information in whole company because we always aim better safety, security, and claim free.

Business

Both domestic and international.
Sanplatec quality for all technology fields.

Even the science is developed, there is no further advance without better 'tool'.

Many companies where developing a new technology use Sanplatec brand, such as government office, such as government offices, university, domestic companies, and medical institution. We directly visit our customers, listing their opinion and demand. Also, we suggest the best products to fit every customer's demand based on our 50-year network and techniques.



CATALOGUES

Our catalogues are suitable for every customer needs. Sanplatec all products, over 12,000 items, are listed on our 'Plastic General Catalogue', and we also published, Bottle products catalogue 'IREMONO' to every users through our dealers all over Japan.



Sanplatec Official Website 'Pla.com'

Our company website 'Pla.com' is an internet shop and about 30,000 users having access monthly. Only maker is capable to offer such rich information and various items, and our website has all researchable, buyable, and usable quality.

CORPORATE PROFILE

Company Name	SANPLATEC CORPORATION
President	Satoshi Kato
Initiation	July 1st, 1960
Date of Foundation	December 3rd, 1964
Capital Fund	JPY 20,000,000
Number of Employees	60
Contents	Manufacture and sell of the laboratory plasticware focusing on Sanplatec brands
Location	<p>■ Head Office No.1-3, 2-chome Doshin, Kita-Ku, Osaka City, 530-0035 JAPAN TEL : 816-6353-5141 FAX : 816-6353-5975</p> <p>■ Tokyo Branch No.11, Kanda Kita-Norimono-Chou, Chiyoda-ku, TOKYO, 101-0036 JAPAN TEL : 813-3252-4461 FAX : 813-3252-4462</p> <p>■ Nagoya Branch No.22-12, 1-chome Shimizu Kita-Ku, Nagoya City, 462-0844 JAPAN TEL : 8152-962-0291 FAX : 8152-962-0293</p> <p>■ Logistic Center No.1-34, 2-chome Doshin, Kita-Ku, Osaka City, 530-0035 JAPAN TEL : 816-6353-5141 FAX : 816-6353-5975</p> <p>■ General Purpose Container Department No.10-10, 4-chome Tenma Kita-Ku, Osaka City, 530-0043 JAPAN TEL : 816-6354-8741 FAX : 816-6354-8743</p> <p>■ Main Plant Nara Factory</p>

HISTORY

- July 1st, 1960** Mitsumasa Kato, Chairperson of director established as 'Sanko Seisakusho' located No.32 5-Chome Kyu-houji Higashi-ku Osaka city Japan.
- December 3rd, 1964** Incorporated 'Sanko Seisakusho Corporation' with relocation to Koubai-cho, Kita-ku Osaka city.
- June 1st, 1971** The company name renamed 'Sanko Plastic Corporation'.
- July 1st, 1971** Expanded to Tokyo and opened the Tokyo branch.
- March 1st, 1974** Expanded to Nagoya city and opened the Nagoya branch.
- November, 1979** TPX products, measuring cylinders, beakers, schales, graduated glasses were introduced to the Hit-Selling Product exhibiton and exhibited.
- July 1st, 1980** Completed 7-story rebar owned building. Removed the head office to No.1-3, 2-chome Doshin, Kita-Ku, Osaka.
- September 1st, 1980** Set up trade division and advanced to international sales and marketing to aim at import/export.
- December, 1980** Auto-Desiccator was introduced to the Hit-Selling Product exhibiton and exhibited.
- September, 1981** Made the technical tie-up and the mutual exclusive selling contract with the main laboratory equipment manufacturer in Europe(Germany, UK, Netherlands, Swizerland, Sweden and Italy) including the major laboratory equipment manufacturer in United States. Set up planning department as product development division.
- December, 1985** Built new annex to owned head office building (8-story rebar)
- July 1st, 1986** The company name renamed 'Sanplatec Corporation'.
- June, 1988** Exhibited to the world's largest science equipment exhibition 'AHEMA' in Frankfurt, Germany.
- July, 1991** Sell the first casting type Auto-desiccator 'D-box ver.1' in market.
- June, 1993** Established 'Sanpla Corporation' to strengthen the manufacture division.
- August, 2000** Built annex (2-story) to head office
- September, 2003** Decided to obtain ISO:9001:2000 certification to get customer's satisfaction formed committee for the promotion and organizer of ISO.
- January, 2004** Set up 'Pla.com: Sales company navi project' for enhancement of the commodity introduction and the operating of distributor introduction on Internet.
- August, 2004** Obtained Quality management system ISO:9001 2000 certification.
- August, 2004** Started internet catalogue ECsite 'Pla.com' 'Sales company Navi'.
- July, 2006** Mitsumasa Kato assumed the office of chairman. Satoshi Kato assumed representative director.
- October, 2006** Obtained quality management system ISO9001:2000 certification (Tokyo branch, Nagoya branch)
- February, 2009** Issued '2010 science equipment general catalogue'.

2010 Established for 50th



- March, 2011** Nagoya Branch Rebuildong, established show room 'Pla.Studio'
- October, 2011** Issued '2012 science equipment general catalogue'.



SANPLATEC CORP.

<http://www.sanplatec.co.jp>

NO.1-3, 2-CHOME DOSHIN, KITAKU OSAKA 530-0035 JAPAN

TEL : 81-6-6353-5326 FAX : 81-6-6353-5014

E-mail : kaigai@sanplatec.co.jp

BRANCH : TOKYO, NAGOYA

ISO 9001 : 2008

